



POLYCLONAL ANTIBODY

For research use only. Not for clinical diagnosis.

Catalog No. CNP-HIBADH-271

Anti HIBADH

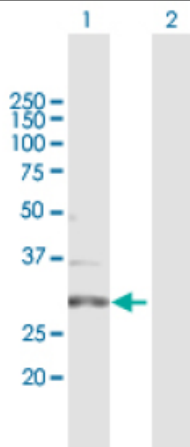
Product type	Primary antibodies
Immunogen	HIBADH (NP_689953.1, 1 a.a. ~ 336 a.a) full-length human protein.
Form	Liquid Protein A purified
Volume	100ul
Specificity	Human
Host	Rabbit

Immunogen Sequence
MAASLRLLGAASGLRYWSRRLRPAAGSFAAVCSRSVASKTPVGFILGNMGNPMAKNLMK
HGYPLIYDVFPDACKEFQDAGEQVSSPADVAEKADRIITMLPTSINAIEAYSGANGIL
KKVKKGSLIDSSTIDPAVSKELAKEVEKMGAVFMDAPVSSGGVGAARSGNLTFMVGGVED
EFAAAQELLGCMGSNVVYCGAVGTGQAAKICNNMLLAISMIGTAEAMNLGIRLGLDPKLL
AKILNMSSGRCWSSDTYNPVPGVMDGVPSANNYQGGFGTTLMAKDLGLAQDSATSTKSPI
LLGSLAHQIYRMMCAKGYSKKDFSSVFQFLREEETF

Gene Alias MGC40361, NS5ATP1

Application notes **WB**
Antibody dilution: 1:1000 ~ 1:2000. Specific band of ~35.30 kDa using HIBADH transfected 293T lysate.

Western Blotting (Transfected lysate)



Western Blot analysis of HIBADH expression in transfected 293T cell line by HIBADH rabbit polyclonal antibody.

Lane 1: HIBADH transfected lysate(35.30 KDa).

Lane 2: Non-transfected lysate.

Antibody dilution: 1:1000. Western Blot analysis of HIBADH expression in mouse kidney (Predicted Mw: 35.3290 kDa).

Western Blotting (Tissue lysate)



HIBADH rabbit polyclonal antibody. Western Blot analysis of HIBADH expression in mouse kidney.

Storage

For continuous use, store at 2-8°C for one-two days. For extended storage, store in -20°C freezer. Working dilution samples should be discarded if not used within 12 hours.

For research use only. Not for clinical diagnosis.



COSMO BIO Co., LTD.

Inspiration for Life Science

TOYO 2CHOME, KOTO-KU, TOKYO, 135-0016, JAPAN

URL: <http://www.cosmobio.co.jp>

e-mail: export@cosmobio.co.jp

[Outside Japan] Phone : +81-3-5632-9617

[国内連絡先] Phone : +81-3-5632-9610

FAX : +81-3-5632-9618

FAX : +81-3-5632-9619