



**POLYCLONAL ANTIBODY**

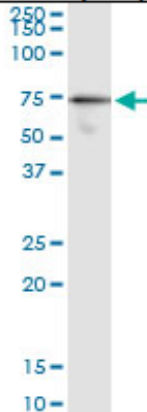
*For research use only. Not for clinical diagnosis.*

**Catalog No. CNP-G3BP-147**

**Anti G3BP**

|                           |   |
|---------------------------|---|
| <b>Product type</b>       | Primary antibodies  |
| <b>Immunogen</b>          | G3BP1 (NP_005745.1, 1 a.a. ~ 466 a.a) full-length human protein.  |
| <b>Form</b>               | Liquid<br>Protein A purified  |
| <b>Volume</b>             | 100ul   |
| <b>Specificity</b>        | Human   |
| <b>Host</b>               | Rabbit  |
| <b>Immunogen Sequence</b> | MVMEKPSPLLVGREFVRQYYTLLNQAPDMLHRFYGKNSSYVHGGLDSNGKPADAVYGQKE<br>IHRKVMSQNFTNCHTKIRHVDAHATLNDGVVVQVMGLLSNNNQALRRFMQTFVLAPEGSV<br>ANKFYVHNDIFRYQDEVFGGFVTEPQEESEEEVEEPEERQQTPEVVPDDSGTFYDQAVVS<br>NDMEEHLEEPVAEPEPDPEPEPEQEPVSEIQEEKPEPVLEETAPEDAQKSSSPADIAQ<br>TVQEDLRTFSWASVTSKNLPPSGAVPVTGIPPHVVKVPASQPRPESKPEQIPPPQRQRD<br>QRVREQRINIPPQRGPRPIREAGEEQDIEPRRMVHRPDSHQLFIGNLPHEVDKSELKDFD<br>QSYGNVVELRINSGGKLPNFGFVVFDDSEPVQKVLNSRPIIMFRGEVRLNVEEKKTRAARE<br>GDRRDNRRLRGGPRGGLGGGMRGPPRGGMVQKPGFGVGRGLAPRQ |
| <b>Gene Alias</b>         | G3BP, HDH-VIII, MGC111040   |
| <b>Application notes</b>  | <b>IP</b><br>Antibody dilution 1:15 ~ 1:60 for immunoprecipitation of G3BP1 transfected lysate.   |

**Immunoprecipitation**



Immunoprecipitation of G3BP1 transfected lysate using G3BP1 rabbit polyclonal antibody and Protein A Magnetic Bead, and immunoblotted with G3BP monoclonal antibody.

**Storage**

For continuous use, store at 2-8°C for one-two days. For extended storage, store in -20°C freezer. Working dilution samples should be discarded if not used within 12 hours.

*For research use only. Not for clinical diagnosis.*



**COSMO BIO Co., LTD.**

Inspiration for Life Science

TOYO 2CHOME, KOTO-KU, TOKYO, 135-0016, JAPAN

URL: <http://www.cosmobio.co.jp>

e-mail: [export@cosmobio.co.jp](mailto:export@cosmobio.co.jp)

[Outside Japan] Phone : +81-3-5632-9617

[国内連絡先] Phone : +81-3-5632-9610

FAX : +81-3-5632-9618

FAX : +81-3-5632-9619