



POLYCLONAL ANTIBODY

For research use only. Not for clinical diagnosis.

Catalog No. CNP-DUS4L-379

Anti DUS4L

| | |
|---------------------|--|
| Product type | Primary antibodies |
| Immunogen | DUS4L (NP_853559.1, 1 a.a. ~ 317 a.a) full-length human protein. |
| Form | Liquid Protein A purified |
| Volume | 100ul |
| Specificity | Human |
| Host | Rabbit |

Immunogen Sequence
MKSDCMQTTICQERKKDPIEMFHSGQLVKVCAPMVRYSKLAFRTLVRKYSCDLCYTPMIV
AADFVKSIAKARDSEFTTNQGDCLIVQFAANDARLLSDAARIVCPYANGIDINCPCPQRW
AMAEGYGACLINKPELVQDMVKQVRNQVETPGFSVSIKIRIHDDLKRTVDLCQKAEATGV
SWITVHGRTAEERHQPVHYDSIKIIKENMSIPVIANGDIRSLKEAENVWRITGTDGVMVA
RGLLANPAMFAGYEETPLKCIWDWVDIALELGTPYMCFHQHLMYMMEKITSRQEKRVFNA
LSSTSAIIDYLTLDHYGI

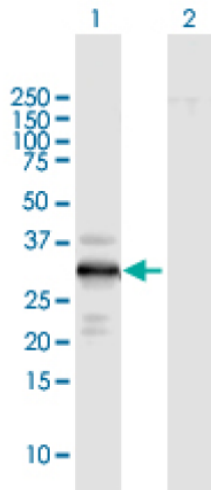
DUS4, MGC133233, PP35

Application notes

WB

Antibody dilution: 1:1000 ~ 1:2000. Specific band of ~35.80 kDa using DUS4L transfected 293T lysate..

Western Blotting (Transfected lysate)



Western Blot analysis of DUS4L expression in transfected 293T cell line by DUS4L rabbit polyclonal antibody.

Lane 1: DUS4L transfected lysate(35.80 KDa).

Lane 2: Non-transfected lysate.

Storage

For continuous use, store at 2-8°C for one-two days. For extended storage, store in -20°C freezer. Working dilution samples should be discarded if not used within 12 hours.

For research use only. Not for clinical diagnosis.



COSMO BIO Co., LTD.

Inspiration for Life Science

TOYO 2CHOME, KOTO-KU, TOKYO, 135-0016, JAPAN

URL: <http://www.cosmobio.co.jp>

e-mail: export@cosmobio.co.jp

[Outside Japan] Phone : +81-3-5632-9617

[国内連絡先] Phone : +81-3-5632-9610

FAX : +81-3-5632-9618

FAX : +81-3-5632-9619