



**POLYCLONAL ANTIBODY**

*For research use only. Not for clinical diagnosis.*

**Catalog No. CNP-CRYZ-477**

# Anti CRYZ

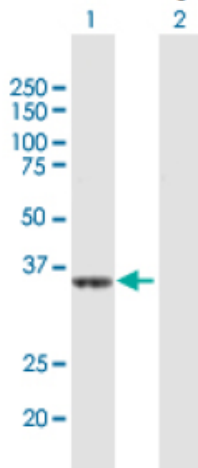
<b>Product type</b>	Primary antibodies
<b>Immunogen</b>	CRYZ (NP_001880.2, 1 a.a. ~ 329 a.a) full-length human protein.
<b>Form</b>	Liquid Protein A purified
<b>Volume</b>	100ul
<b>Specificity</b>	Human
<b>Host</b>	Rabbit

**Immunogen Sequence**  
MATGQKLMRAVRVFEFGGPEVLKLRSDIAVPIPKDHQVLIKVHACGVNPNVETYIRSGTYS  
RKPLLPTPGSDVAGVIEAVGDNASAFKKGDRVFTSSTISGGYAEYALAADHTVYKLPEK  
LDFKQGAAGIPYFTAYRALIHSACVKAGESVLVHGASGGVGLAACQIARAYGLKILGTA  
GTEEGQKIVLQNGAHEVFNHREVNYIDKIKKYVGEKGDIIIEMLANVNLKDLSSLSHG  
GRVIVVGSRGTEINPRDTMAKESIIGVTLFSSTKEEFQQYAAALQAGMEIGWLKPVIG  
SQYPLEKVAEAHENIIHGSGATGKMILL

**Gene Alias** DKFZp779E0834, FLJ41475

**Application notes** **WB**  
Antibody dilution: 1:1000 ~ 1:2000. Specific band of ~35.20 kDa using CRYZ transfected 293T lysate

**Western Blotting (Transfected lysate)**



Western Blot analysis of CRYZ expression in transfected 293T cell line by CRYZ rabbit polyclonal antibody.

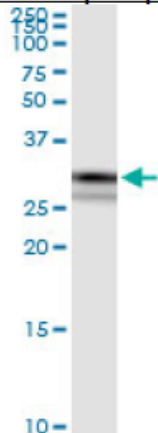
Lane 1: CRYZ transfected lysate(35.20 KDa).

Lane 2: Non-transfected lysate.

## IP

Antibody dilution 1:15 ~ 1:60 for immunoprecipitation of CRYZ transfected lysate

### Immunoprecipitation



Immunoprecipitation of CRYZ transfected lysate using CRYZ rabbit polyclonal antibody and Protein A Magnetic Bead, and immunoblotted with CRYZ purified mouse polyclonal antibody.

## Storage

For continuous use, store at 2-8°C for one-two days. For extended storage, store in -20°C freezer. Working dilution samples should be discarded if not used within 12 hours.

*For research use only. Not for clinical diagnosis.*



**COSMO BIO Co., LTD.**

Inspiration for Life Science

TOYO 2CHOME, KOTO-KU, TOKYO, 135-0016, JAPAN

URL: <http://www.cosmobio.co.jp>

e-mail: [export@cosmobio.co.jp](mailto:export@cosmobio.co.jp)

[Outside Japan] Phone : +81-3-5632-9617

[国内連絡先] Phone : +81-3-5632-9610

FAX : +81-3-5632-9618

FAX : +81-3-5632-9619