



**POLYCLONAL ANTIBODY**

*For research use only. Not for clinical diagnosis.*

**Catalog No. CNP-C4ORF43-372**

# Anti C4orf43

<b>Product type</b>	Primary antibodies
<b>Immunogen</b>	C4orf43 (AAH11842.1, 1 a.a. ~ 203 a.a) full-length human protein.
<b>Form</b>	Liquid Protein A purified
<b>Volume</b>	100ul
<b>Specificity</b>	Human
<b>Host</b>	Rabbit

**Immunogen Sequence**  
MPKAPKKGKSAGREKKVIHPYSRCAAQITREAHKQEKKEKLNKALRLNLVGEKQLQWFQN  
HLDPPKKRYSKGDACELIERYLNRFSSLEQIELHNSIRDROGRRHCSRETVIKQTMERE  
RQQFEGYGLEIPDILNASNLKTFREWDFDLKLPNIKMRKICANDAIPKTCKRKTITVD  
QDLGELELNDESSDSDEEMTAVA

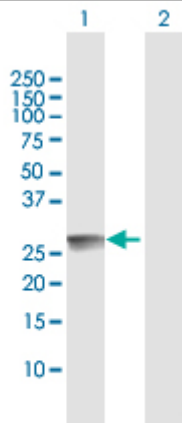
FLJ11184

**Application notes**

**WB**

Antibody dilution: 1:1000 ~ 1:2000. Specific band of ~23.80 kDa using C4orf43 transfected 293T lysate.

Western Blotting (Transfected lysate)



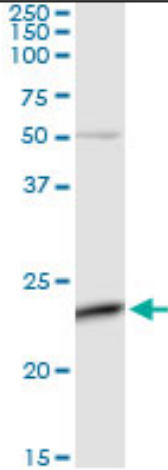
Western Blot analysis of C4orf43 expression in transfected 293T cell line by C4orf43 rabbit polyclonal antibody.

Lane 1: C4orf43 transfected lysate(23.80 KDa).

Lane 2: Non-transfected lysate.

Antibody dilution: 1:1000. Western Blot analysis of C4orf43 expression in mouse kidney (Predicted Mw: 23.8210 kDa).

**Western Blotting (Tissue lysate)**

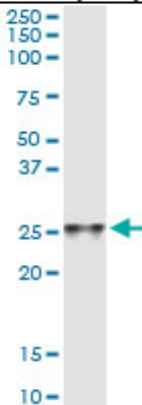


C4orf43 rabbit polyclonal antibody. Western Blot analysis of C4orf43 expression in mouse kidney.

**IP**

Antibody dilution 1:15 ~ 1:60 for immunoprecipitation of C4orf43 transfected lysate.

**Immunoprecipitation**



Immunoprecipitation of C4orf43 transfected lysate using C4orf43 rabbit polyclonal antibody and Protein A Magnetic Bead, and immunoblotted with C4orf43 purified mouse polyclonal antibody.

**Storage**

For continuous use, store at 2-8°C for one-two days. For extended storage, store in -20°C freezer. Working dilution samples should be discarded if not used within 12 hours.

*For research use only. Not for clinical diagnosis.*



**COSMO BIO Co., LTD.**

Inspiration for Life Science

TOYO 2CHOME, KOTO-KU, TOKYO, 135-0016, JAPAN

URL: <http://www.cosmobio.co.jp>

e-mail: [export@cosmobio.co.jp](mailto:export@cosmobio.co.jp)

[Outside Japan] Phone : +81-3-5632-9617

[国内連絡先] Phone : +81-3-5632-9610

FAX : +81-3-5632-9618

FAX : +81-3-5632-9619