



**POLYCLONAL ANTIBODY**

*For research use only. Not for clinical diagnosis.*

**Catalog No. CNP-ATP2B4-216**

**Anti ATP2B4**

<b>Product type</b>	Primary antibodies
<b>Immunogen</b>	ATP2B4 (NP_001001396.1, 1 a.a. ~ 1170 a.a) full-length human protein.
<b>Form</b>	Liquid Protein A purified
<b>Volume</b>	100ul
<b>Specificity</b>	Human
<b>Host</b>	Rabbit

<b>Immunogen Sequence</b>	<p>MTNPSDRVLPANSMAESREGDFGCTVMELRKLMELRSDALTQINVHYGGVQNLCSRLKT          SPVEGLSGNPADLEKRRQVFGHNVIPKPKTFLELVWEALQDVTLLIILEIAAIIISLVLS          FYRPAGEENELCGQVATTPEDENEAQAGWIEGAAILFSVIIIVLVTAFNDSKEKQFRGL          QCRIEQEQKFSIIRNGQLIQLPVAEIVVGDIQVKGDLLPADGILIQGNDLKIDESSLT          GESDHVKKSLDKDPMLLSGTHVMEGSGRMVVAVGVNSQTGIILTLLGVNEDDEGEKKK          GKKQGVPEENRNKAKTQDGVLEIQLNSQEGIDNEEKDKKAVKVPKKEKSVLQGLKRLA          VQIGKAGLLMSALTVFILLYFVIDNFVINRRPWLPECTPIYIQYFVKFFIIGITVLVVA          VPEGLPLAVTISLAYSVKMMKDNLLVRHLDACETMGNATAICSDKTGTLTMNRMTVVQA          YIGGIHYRQIPSPDVFLPKVLDLIVNGISINSAYTSKILPPEKEGGLPRQVGNKTECALL          GFVTDLKQDYQAVRNEVPPEEKLYKVYTFNSVRKSMSTVIRNPNGGFRMYSKGASEIILRK          CNRILDRKGEAVPFKNKDRDDMVRTVIEPMACDGLRTICIAYRDFDDTEPSWDNENEILT          ELTCIAVVGIEDPVRPEVPDAIAKCKQAGITVRMVTGDNINTARAIATKCGILTPGDDFL          CLEGKEFNRLIRNEKGEVEQEKLDKIWPKLRVLRSSPTDKHTLVKGIIDSTVGEHRQVV          AVTGDGTNDGPALKKADVGFAMGIAGTDVAKEASDIILTDDNFTSIVKAVMWGRNVYDSI          SKFLQFQLTVNVVAVIVAFTGACITQDSPLKAVQMLWVNLIMDTFASLALATEPPTESLL          KRRPYGRNKPLISRTMMKNILGHAFYQLIVIFILVFAGEKFFDIDSGRKAPLHSPPSQHY          TIVFNTFVLMQLFNEINSRKIHGEKNVFSGIYRNIIFCSVVLGTFICQIFIVEFGGKPF          CTSLSLSQWLWCLFIGIGELLWGQFISAIPTSLKFLKEAGHGTTKEEITKDAEGLDEID          HAEMELRRGQILWFRGLNRIQTQIDVINTFQTGASFKGVLRQNMGGHLDVKLVPSSSYV          AVAPVKSSPTTSVPAVSSPPMGNQSGQSV</p>
---------------------------	---

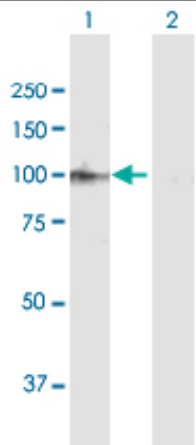
<b>Gene Alias</b>	ATP2B2, DKFZp686G08106, DKFZp686M088, MXRA1, PMCA4, PMCA4b, PMCA4x
-------------------	--

**Application notes**

**WB**

Antibody dilution: 1:1000 ~ 1:2000. Specific band of ~129.40 kDa using ATP2B4 transfected 293T lysate..

**Western Blotting (Transfected lysate)**



Western Blot analysis of ATP2B4 expression in transfected 293T cell line by ATP2B4 rabbit polyclonal antibody.

Lane 1: ATP2B4 transfected lysate(129.40 KDa).

Lane 2: Non-transfected lysate.

**Storage**

For continuous use, store at 2-8°C for one-two days. For extended storage, store in -20°C freezer. Working dilution samples should be discarded if not used within 12 hours.

*For research use only. Not for clinical diagnosis.*



**COSMO BIO Co., LTD.**

Inspiration for Life Science

TOYO 2CHOME, KOTO-KU, TOKYO, 135-0016, JAPAN

URL: <http://www.cosmobio.co.jp>

e-mail: [export@cosmobio.co.jp](mailto:export@cosmobio.co.jp)

[Outside Japan] Phone : +81-3-5632-9617

[国内連絡先] Phone : +81-3-5632-9610

FAX : +81-3-5632-9618

FAX : +81-3-5632-9619