



**POLYCLONAL ANTIBODY**

*For research use only. Not for clinical diagnosis.*

**Catalog No. CNP-ASMTL-312**

**Anti ASMTL**

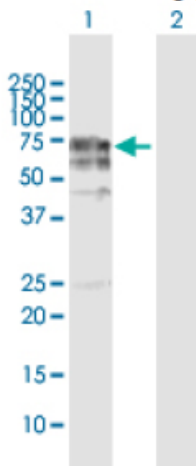
<b>Product type</b>	Primary antibodies
<b>Immunogen</b>	ASMTL (AAH02508.1, 1 a.a. ~ 621 a.a) full-length human protein..
<b>Form</b>	Liquid Protein A purified
<b>Volume</b>	100ul
<b>Specificity</b>	Human
<b>Host</b>	Rabbit

**Immunogen Sequence**  
 MVLCPVIGKLLHKRVVLASASPRRQEILSNAGLRFVVPSPKFKEKLDKASFATPYGYAME  
 TAKQKALEVANRLYQKDLRAPDVVIGADTIVTVGGILILEKPVDKQDAYRMLSRLSGREHS  
 VFTGVAIVHCSSKDHQLDTRVSEFYEETKVKFSELSEELLWEYVHSGEPMKAGGYGIQA  
 LGGMLVESVHGDFLNVVGFPLNHFCQKLVKLYPPRPEDLRRSVKHDSIPAADTFEDLSD  
 VEGGGSEPTQRDAGSRDEKAEAGEAGQATAEAECHRTRETLPPFPTRLLELIEGFMLSKG  
 LLTACKLKVFDLLKDEAPQKAADIASKVDASACGMERLLDICAAMGELLEKTEQGYSENTET  
 ANVYLASDGEYSLHGFIMHNNDLTWNLFTYLEFAIREGTNQHHRALGKKAEDLFQDAYYQ  
 SPETRLRFMRAMHGMTKLTACQVATAFNLSRFSSACDVGGCTGALARELAREYPRMQVTV  
 FDLPDIIELAAHFQPPGPQAVQIHFAAGDFFRDPLPSAELYVLCRILHDWPDDKVHKLLS  
 KVAESCKPGAGLLLVELLDEEKRVAQRALMQLNMLVQTEGKERSLGEYQCLELHGFH  
 QVQVVHLGGVLDAILATKVAP

**Gene Alias** ASMTLX, ASMTLY, ASTML

**Application notes** **WB**  
 Antibody dilution: 1:1000 ~ 1:2000. Specific band of ~68.80 kDa using ASMTL transfected 293T lysate.

**Western Blotting (Transfected lysate)**



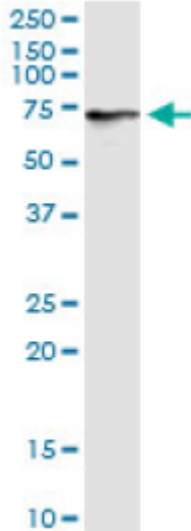
Western Blot analysis of ASMTL expression in transfected 293T cell line by ASMTL rabbit polyclonal antibody.

Lane 1: ASMTL transfected lysate(68.80 KDa).

Lane 2: Non-transfected lysate.

Antibody dilution: 1:1000. Western Blot analysis of ASMTL expression in human liver (Predicted Mw: 68.8570 kDa).

**Western Blotting (Tissue lysate)**

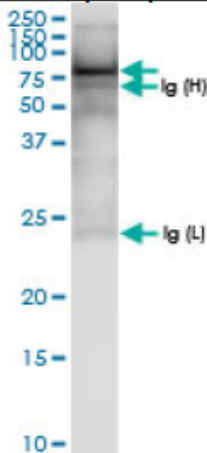


ASMTL rabbit polyclonal antibody. Western Blot analysis of ASMTL expression in human liver.

**IP**

Antibody dilution 1:15 ~ 1:60 for immunoprecipitation of ASMTL transfected lysate.

**Immunoprecipitation**



Immunoprecipitation of ASMTL transfected lysate using ASMTL rabbit polyclonal antibody and Protein A Magnetic Bead, and immunoblotted with ASMTL rabbit polyclonal antibody.

**Storage**

For continuous use, store at 2-8°C for one-two days. For extended storage, store in -20°C freezer. Working dilution samples should be discarded if not used within 12 hours.

*For research use only. Not for clinical diagnosis.*



**COSMO BIO Co., LTD.**

Inspiration for Life Science

TOYO 2CHOME, KOTO-KU, TOKYO, 135-0016, JAPAN

URL: <http://www.cosmobio.co.jp>

e-mail: [export@cosmobio.co.jp](mailto:export@cosmobio.co.jp)

[Outside Japan] Phone : +81-3-5632-9617

[国内連絡先] Phone : +81-3-5632-9610

FAX : +81-3-5632-9618

FAX : +81-3-5632-9619