



**MONOCLONAL ANTIBODY**

*For research use only. Not for clinical diagnosis.*

**Catalog No. AGE-M04**

# Anti N<sup>ω</sup> - (carboxymethyl) arginine (CMA)

## BACKGROUND

N<sup>ω</sup>-(carboxymethyl) arginine (CMA), a CML analogue, is an acid-labile AGE structure which was discovered in enzymatic hydrolysate of glycated collagen. CMA is preferentially generated in glycated collagen.

<b>Product type</b>	Primary antibodies
<b>Host</b>	Mouse
<b>Source</b>	Purified from ascite
<b>Form</b>	Liquid with 0.1% proclin
<b>Volume</b>	100 $\mu$ l
<b>Concentration</b>	0.1 mg/ml
<b>Specificity</b>	CMA
<b>Antigen</b>	CMA-conjugated HAS
<b>Clone</b>	3F5
<b>Isotype</b>	IgG1

## Application notes

### Recommended use

WB, IHC, ELISA

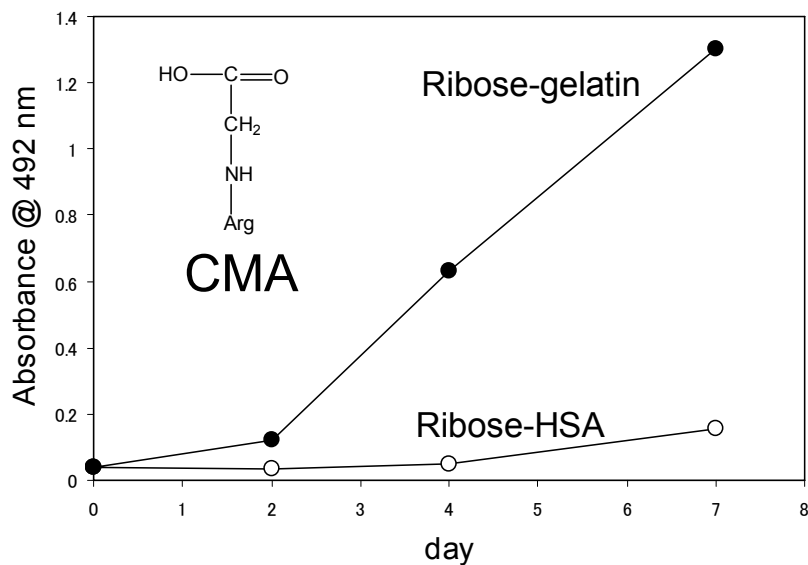
### Recommended dilutions

Western blotting, 1/100 to 1/200

Immunohistochemistry (frozen sections), 1/50 to 1/100

ELISA, 1/100 to 1/200

Optimal dilutions/concentrations should be determined by the end user.





COSMO BIO Co., LTD.

Inspiration for Life Science

**Storage**

Store below -20°C (below -70°C for prolonged storage).

Aliquot to avoid cycles of freeze/thaw.

**References**

- 1). Iijima K, Murata M, Takahara H, Irie S, Fujimoto D. Identification of N(omega)-carboxymethylarginine as a novel acid-labile advanced glycation end product in collagen. *Biochem J.* 347 Pt 1:23-27 (2000)
- 2). Mera K., Fujiwara Y., Otagiri M., Sakata N., Nagai R. Immunological Detection of N<sup>ε</sup>-carboxymethylarginine by Specific Antibody. *Ann N Y Acad Sci.* 1126, 155-157 (2008)

*For research use only. Not for clinical diagnosis.*



COSMO BIO Co., LTD.

Inspiration for Life Science

TOYO 2CHOME, KOTO-KU, TOKYO, 135-0016, JAPAN

URL: <http://www.cosmobio.co.jp>

e-mail: [export@cosmobio.co.jp](mailto:export@cosmobio.co.jp)

[Outside Japan] Phone : +81-3-5632-9617

[国内連絡先] Phone : +81-3-5632-9610

FAX : +81-3-5632-9618

FAX : +81-3-5632-9619