

p53 Antibody
AbVantage™ Pack
Affinity Purified



Catalog No. **Size**
A310-068A 3 vials x 100 ul

Contents

R x-p53 (BL1371)	A300-247A
R x-p53 (BL1372)	A300-248A
R x-p53 (BL1373)	A300-249A

Conditions

Each antibody is supplied as 100 mcL at 1.0 mg/mL.

Storage: 2 - 8°C

Physical State: Liquid

Buffer: Tris-citrate/phosphate, pH 7 to 8

Preservative: 0.1% Sodium Azide

Shelf life: 1 year from date of receipt

Notes

Centrifuge microtube to remove product from lid.

Reactivity: Human. For additional information see data sheet for each individual product.

Names: p53, TP53, TRP53, tumor protein p53, Li-Fraumeni syndrome.

Country of Origin: USA

For In vitro laboratory use only. Not for any clinical, therapeutic, or diagnostic use in humans or animals. Not for animal or human consumption.

This product may not be resold or modified for resale without the prior written approval of Bethyl Laboratories, Inc.

p53 Antibody (BL1371)
Affinity Purified

Produced in Rabbit

Catalog No. **Size**
A300-247A 0.1 ml



Conditions

Storage: 2 - 8⁰ C
Antibody Concentration: 1 mg/ml
Physical State: Liquid
Buffer: Tris-citrate/phosphate, pH 7 to 8
Preservative: 0.1% Sodium Azide
Shelf life: 1 year from date of receipt

Production Procedures

Antibody was affinity purified using an epitope specific to p53 immobilized on solid support.
The epitope recognized by A300-247A maps to a region between residues 50 and 100 of human tumor protein p53 using the numbering given in SwissProt entry P04637 (GeneID 7157).

Antibody concentration was determined by extinction coefficient: absorbance at 280 nm of 1.4 equals 1.0 mg of IgG.

Notes

Centrifuge tube to remove product from lid.
Reactivity: Human. Other species have not been tested. The antibody is not likely to react with the mouse ortholog owing to divergence of sequence at the site to which the epitope maps.
Alternative Names: p53, TP53, TRP53, tumor protein p53, Li-Fraumeni syndrome.

Country of Origin: USA

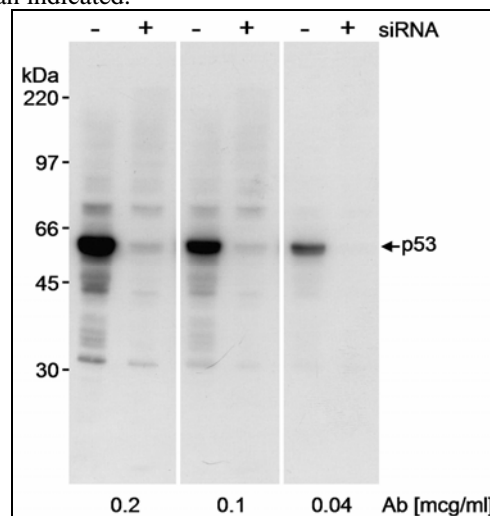
For In Vitro laboratory use only. Not for any clinical, therapeutic, or diagnostic use in humans or animals. Not for animal or human consumption.

This product may not be resold or modified for resale without the prior written approval of Bethyl Laboratories, Inc.

Applications

Optimal working dilutions should be determined experimentally by the investigator. Prepare working dilution immediately before use. Suggested starting dilutions are as follows.
Western Blot: 1:5,000 – 1:25,000
Immunoprecipitation: 2 to 10 mcg/mg lysate
Histo/Cytochemistry: not tested

In some cases, the antibody may be diluted further than indicated.



Detection of Human p53 by Western Blot.
Samples: Whole cell lysate (100 mcg) from 293T cells that were treated with a siRNA for p53 (+) or mock treated (-). *Antibody:* Rabbit anti-p53 antibody BL1371 (Cat. No. A300-247A) used at the indicated concentrations. *Detection:* Chemiluminescence with an exposure time of less than 1 minute.

Related Products

R anti-p53 Antibody (BL1372)	A300-248A
R anti-p53 Antibody (BL1373)	A300-249A
G anti-Rabbit IgG-h+l FITC conjugated	A120-101F
G anti-Rabbit IgG-h+l HRP conjugated	A120-101P
P53 Blocking Peptide BP1371	BP300-247

p53 Antibody (BL1372) Affinity Purified

Produced in Rabbit

Catalog No. **Size**
A300-248A 0.1 ml



Conditions

Storage: 2 - 8⁰ C
Antibody Concentration: 1 mg/ml
Physical State: Liquid
Buffer: Tris-citrate/phosphate, pH 7 to 8
Preservative: 0.1% Sodium Azide
Shelf life: 1 year from date of receipt

Production Procedures

Antibody was affinity purified using an epitope specific to p53 immobilized on solid support.

The epitope recognized by A300-248A maps to a region between residues 325 and 375 of human tumor protein p53 using the numbering given in SwissProt entry P04637 (GeneID 7157).

Antibody concentration was determined by extinction coefficient: absorbance at 280 nm of 1.4 equals 1.0 mg of IgG.

Notes

Centrifuge tube to remove product from lid.

Reactivity: Human. Other species have not been tested. The antibody is not likely to react with the mouse ortholog owing to divergence of sequence at the site to which the epitope maps.

Alternative Names: p53, TP53, TRP53, tumor protein p53, Li-Fraumeni syndrome.

Country of Origin: USA

For In Vitro laboratory use only. Not for any clinical, therapeutic, or diagnostic use in humans or animals. Not for animal or human consumption.

This product may not be resold or modified for resale without the prior written approval of Bethyl Laboratories, Inc.

Applications

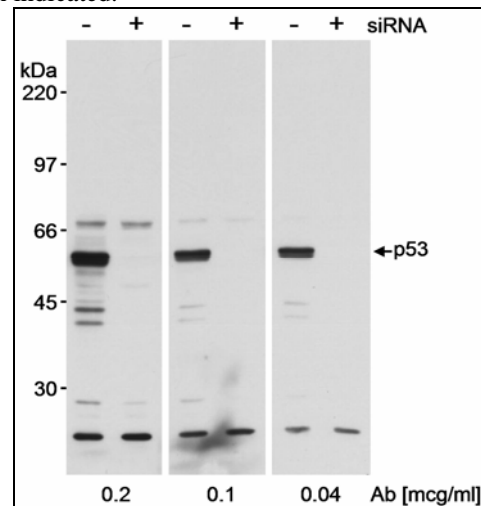
Optimal working dilutions should be determined experimentally by the investigator. Prepare working dilution immediately before use. Suggested starting dilutions are as follows.

Western Blot: 1:5,000 – 1:25,000

Immunoprecipitation: 2 to 10 mcg/mg lysate.
BL1372 is much less efficient than BL1371 (cat. no. A300-247A) in immunoprecipitation.

Histo/Cytochemistry: not tested

In some cases, the antibody may be diluted further than indicated.



Detection of Human p53 by Western Blot.

Samples: Whole cell lysate (100 mcg) from 293T cells that were treated with a siRNA for p53 (+) or mock treated (-). *Antibody:* Rabbit anti-p53 antibody BL1372 (Cat. No. A300-248A) used at the indicated concentrations. *Detection:* Chemiluminescence with an exposure time of less than 1 minute.

Related Products

R anti-p53 Antibody (BL1371)	A300-247A
R anti-p53 Antibody (BL1373)	A300-249A
G anti-Rabbit IgG-h+l FITC conjugated	A120-101F
G anti-Rabbit IgG-h+l HRP conjugated	A120-101P
P53 Blocking Peptide BP1372	BP300-248

p53 Antibody (BL1373)

Affinity Purified



Produced in Rabbit

Catalog No. **Size**
A300-249A 0.1 ml

Conditions

Storage: 2 - 8⁰ C
Antibody Concentration: 1 mg/ml
Physical State: Liquid
Buffer: Tris-citrate/phosphate, pH 7 to 8
Preservative: 0.1% Sodium Azide
Shelf life: 1 year from date of receipt

Production Procedures

Antibody was affinity purified using an epitope specific to p53 immobilized on solid support.

The epitope recognized by A300-249A maps to a region between residues 375 and the C-terminus (residue 393) of human tumor protein p53 using the numbering given in SwissProt entry P04637 (GeneID 7157).

Antibody concentration was determined by extinction coefficient: absorbance at 280 nm of 1.4 equals 1.0 mg of IgG.

Notes

Centrifuge tube to remove product from lid.

Reactivity: Human. Other species have not been tested. The antibody may react with the mouse ortholog owing to conservation of sequence at the site to which the epitope maps.

Alternative Names: p53, TP53, TRP53, tumor protein p53, Li-Fraumeni syndrome.

Country of Origin: USA

For In Vitro laboratory use only. Not for any clinical, therapeutic, or diagnostic use in humans or animals. Not for animal or human consumption.

This product may not be resold or modified for resale without the prior written approval of Bethyl Laboratories, Inc.

Applications

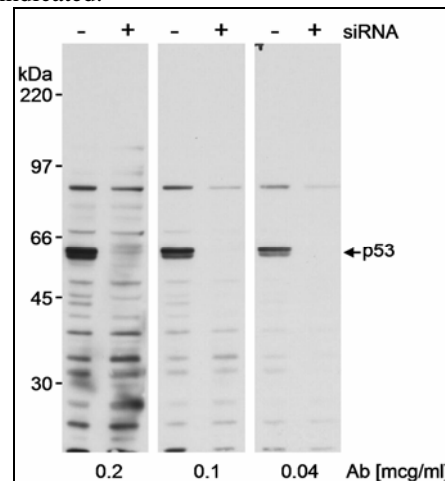
Optimal working dilutions should be determined experimentally by the investigator. Prepare working dilution immediately before use. Suggested starting dilutions are as follows.

Western Blot: 1:5,000 – 1:25,000

Immunoprecipitation: 2 to 10 mcg/mg lysate. BL1373 is less efficient than BL1371 (cat. no. A300-247A) in immunoprecipitation.

Histo/Cytochemistry: not tested

In some cases, the antibody may be diluted further than indicated.



Detection of Human p53 by Western Blot.

Samples: Whole cell lysate (100 mcg) from 293T cells that were treated with a siRNA for p53 (+) or mock treated (-). *Antibody:* Rabbit anti-p53 antibody BL1373 (Cat. No. A300-249A) used at the indicated concentrations. *Detection:* Chemiluminescence with an exposure time of less than 1 minute.

Related Products

R anti-p53 Antibody (BL1371)	A300-247A
R anti-p53 Antibody (BL1372)	A300-248A
G anti-Rabbit IgG-h+l FITC conjugated	A120-101F
G anti-Rabbit IgG-h+l HRP conjugated	A120-101P
p53 Blocking Peptide BP1373	BP300-249

p53 Antibody
AbVantage™ Pack
Affinity Purified



Catalog No. **Size**
A310-068A 3 vials x 100 ul each

MATERIAL SAFETY DATA SHEET

Contents Description

Each antibody product contains rabbit immunoglobulin G (IgG) protein in Tris-citrate/phosphate buffer, pH 7 to 8 with 0.1% Sodium Azide (NaN_3).

Hazardous Ingredients

Rabbit IgG Protein - No known toxicity for this biological material.

Sodium Azide (NaN_3) - AZIDE FORMS EXPLOSIVE CHEMICAL COMPOUNDS WITH LEAD AND COPPER PLUMBING. CARE MUST BE TAKEN TO WASH WASTE DOWN DRAINS WITH LARGE VOLUMES OF WATER.

LD50 oral mouse - 27 mg/kg.

Wash all affected areas with large volumes of water and if swallowed consult your physician immediately.

The above information is believed to be correct but does not purport to be all-inclusive and is intended to be used only as a guide. Bethyl Laboratories, Inc. shall not be liable or responsible in any way for use of either this information or the material supplied. Disposal of hazardous material may be subject to federal, state, or local laws or regulations.