



MONOCLONAL ANTIBODY

For research use only. Not for clinical diagnosis.

Catalog No. BCL-AB-002

Anti HBV Pre-S1 antibody, mouse mono-2

BACKGROUND

Hepatitis B virus (HBV) expresses three types of surface antigens, i.e. S-, M-, and L-protein. L-protein is composed of S-, Pre-S2, and Pre-S1 region. The deletion of Pre-S1 region conforms M-protein, and further deletion of Pre-S2 region results in S-protein. The Pre-S1 region is known to be the hepatic cell recognition site and to be important in the HBV infection processes.

This product, anti HBV Pre-S1 antibody, is a monoclonal antibody that specifically recognize Pre-S1 region and can be used to detect HBV Pre-S1 region. Thus this product provides useful tools for researches for HBV infection and other purposes.

Product type	Primary antibodies
Host	Mouse
Source	Purified from Ascites
Form	Liquid
Volume	100ug
Concentration	1mg/mL in 0.9% Saline
Specificity	Pre-S1 region of HBsAg L-protein
Antigen	Partial peptide of Pre-S1
Isotype	IgG1k

Application notes WB, ELISA

Recommended use

Recommended dilutions

Western blotting, 50-200ng/ml

ELISA, 0.2ug/ml.

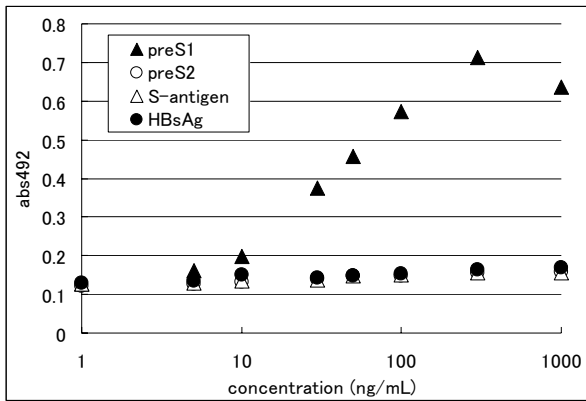
A sensitive ELISA can be constructed by combination use of Anti HBV Pre-S1 antibody, mouse mono-1 (cat #: BCL-AB-001). As a positive control or the standard for the ELISA, HBsAg-L-protein (cat# BCL-AG-001) can also be used.

Optimal dilutions/concentrations should be determined by the end user.

Cross reactivity see below figure

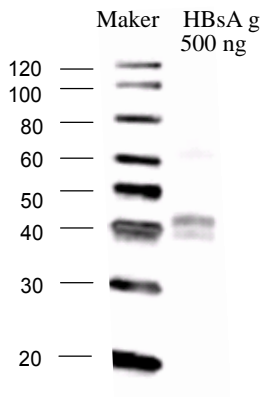
Storage Store at -20°C (do not repeat freeze and thaw)

References



Among components of L-protein, only the PreS-1 region peptide was recognized. The HBsAg derived from human serum that does not contain L-protein was not recognized by the antibody.

Fig.1. Specificity of the antibody recognition



Human derived HBsAg which contain L-protein was blotted and immunostained by this product, anti-Pre-S1 antibody mouse mono-2. Two positive bands were detected in about 42KDa which correspond to L-protein. The doublet signal is due to the difference of glycosylation of L-proteins.

Fig.2. Western Blotting for HBsAg, L-protein

RELATED PRODUCT

BCL-AG-001 Hepatitis B Virus Surface Antigen (HBsAg), L-protein (Recombinant)

BCL-AB-001 Anti HBV Pre-S1 antibody, mouse mono-1

For research use only. Not for clinical diagnosis.

Manufactured by  **Beacle, Inc.**



COSMO BIO Co., LTD.

Inspiration for Life Science

TOYO 2CHOME, KOTO-KU, TOKYO, 135-0016, JAPAN

URL: <http://www.cosmobio.co.jp>

e-mail: export@cosmobio.co.jp

[Outside Japan] Phone : +81-3-5632-9617

[国内連絡先] Phone : +81-3-5632-9610

FAX : +81-3-5632-9618

FAX : +81-3-5632-9619