



Anti-Calreticulin / CALR

BACKGROUND

Calreticulin (CALR) is calcium-binding chaperone that promotes folding, oligomeric assembly and quality control in the endoplasmic reticulum (ER) via the calreticulin/calnexin cycle. This lectin interacts transiently with almost all of the monoglucosylated glycoproteins that are synthesized in the ER. Interacts with the DNA-binding domain of NR3C1 and mediates its nuclear export. Involved in maternal gene expression regulation. May participate in oocyte maturation via the regulation of calcium homeostasis.

Product type	Primary antibody
Immunogen	C-EEDEKEEDEEESPGQAKDEL (C-terminal of mouse CALR protein)
Host Species	Rabbit
Fusion Partner	-
Clone Designation	-
Isotype	-
Source	-
Purification	-
Form	Liquid
Formulation Buffer	Whole rabbit serum added with 0.09% sodium azide.
Concentration	-
Volume	100 ul
Label	Unlabeled
Specificity	Calreticulin / CALR
Cross species reactivity	Mouse. Not tested with other species.
Storage Conditions	Shipped at 4°C. Upon arrival, spin-down and store at 4°C for short period or -20°C for longer period. Aliquot to avoid cycles of freeze/thaw.
Other	Data Link : uniprot/P14211 mouse Calreticulin, Gene I D 12317 mouse Calr

Application notes	• Western blotting: 1/1,000
Recommended dilutions	• Immunoprecipitation: 1/100

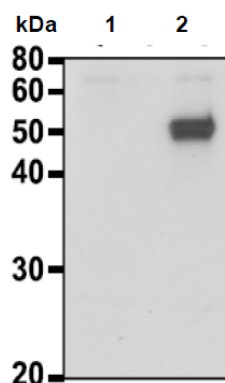
*Molecular mass : CALR consists of 416 amino acids with molecular mass of 47,995 Da.

Other applications have not been tested.

Optimal dilutions/concentrations should be determined by the end user.

References	1) Ikawa M., <i>et al.</i> Calsperin is a testis-specific chaperone required for sperm fertility. <i>J Biol Chem.</i> 2011 Feb 18;286(7):5639-46. PMID: 21131354
-------------------	--

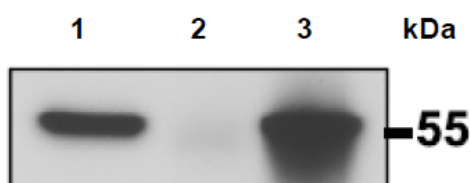
ANTIBODY CHARACTERIZATION



Embryonic fibroblast cells prepared from *Calr*^{-/-} mouse were transfected with a plasmid expressing *Calr*. The cell lysate was analyzed by western blotting with anti-CALR antibody at 1/500 dilution.

1. Mock-infected cell lysate as a negative control.
2. Cell lysate transfected with a plasmid expressing *Calr*.

Fig.1. Identification of CALR protein by western blotting with anti-CALR antibody.



Lysates of wild-type mouse testis were immunoprecipitated with anti-CALR antibody and the precipitates were analyzed by western blotting with the same antibody.

1. Input testis lysate
2. Precipitated with preimmune serum
3. Precipitated with anti-CALR antibody

Fig.2. Immunoprecipitation of CALR protein with anti-CALR antibody.

RELATED PRODUCTS:

Product Name	Clone	Application	Maker	Cat#
Anti- SLA (haploid sperm cell-specific antigen) Monoclonal Antibody	TRA54	WB / IP / EM	BAM	73-001
Anti- GENA (germ cell-specific antigen) Monoclonal Antibody	TRA98	WB / IHC	BAM	73-003
Anti- ACE3 Polyclonal Antibody	Poly.	WB / IHC / IF	BAM	73-006
Anti- Calreticulin / CALR Polyclonal Antibody	Poly.	WB / IP	BAM	73-018
Anti- Calreticulin-3 / CALR3 Polyclonal Antibody	Poly.	WB / IP / IHC	BAM	73-022
Anti- Calnexin Polyclonal Antibody	Poly.	WB / IP	BAM	73-026
Anti- CD52 Polyclonal Antibody	Poly.	WB / IP	BAM	73-030
Anti- Calmegin Polyclonal Antibody	Poly.	WB / IP	BAM	73-034
Anti- IGSF8 Polyclonal Antibody	Poly.	WB / IF	BAM	73-038
Anti- PDILT Polyclonal Antibody	Poly.	WB / IP / IHC	BAM	73-051
Anti- PMIS2 Polyclonal Antibody	Poly.	WB	BAM	73-055
Anti- SPACA1 Polyclonal Antibody	Poly.	WB	BAM	73-062
Anti- SPESP1 Polyclonal Antibody	Poly.	WB / IF	BAM	73-065

For research use only, Not for diagnostic use.

Manufactured by BioAcademia, Inc.



COSMO BIO CO., LTD.

Inspiration for Life Science

TOYO 2CHOME, KOTO-KU, TOKYO, 135-0016, JAPAN

URL: <http://www.cosmobio.co.jp>

e-mail: export@cosmobio.co.jp

[Outside Japan] Phone : +81-3-5632-9617

[国内連絡先] Phone : +81-3-5632-9610

FAX : +81-3-5632-9618

FAX : +81-3-5632-9619