



## MONOCLONAL ANTIBODY

*For research use only. Not for clinical diagnosis.*

**Catalog No. 71-185EX**

# Anti-EID1 antibody, mouse monoclonal (clone 26)

## BACKGROUND

*EID1* (EP300 interacting inhibitor of differentiation 1) encodes a 21 kDa protein, which interacts with RB1 and EP300 and acts as a repressor of MYOD1 transcription. *EID1* inhibits EP300 and CBP histone acetyltransferase activity. It may be involved in coupling cell cycle exit to the transcription of genes required for cellular differentiation.

## Applications

1) Western blotting (~1 ug/ml)      2) Immunofluorescence staining (1~5 ug/ml)      3) ELISA

Other applications have not been tested.

**Antigen:** Synthetic peptide containing amino acids 159-187 of human EID1 protein

**Specificity:** Reacts with human, mouse and rat EID1 proteins

**Isotype:** Mouse IgG2a (κ)

**Product:** This antibody was purified by our propriety chromatography under mild conditions as IgG fraction from serum-free growth medium of mouse hybridoma clone #26.

**Form:** Purified IgG 1mg/ml in PBS (pH 7.4), 50% glycerol, sterilized by filtration. Azide- and carrier-free

**Size:** 50 ug

**Storage:** Shipped at 4°C or -20°C, and upon arrival, spin-down and store at -20°C.

**Data Link** UniProtKB/Swiss-Prot [Q9Y6B2](#) (EID1\_HUMAN)

## References

1. MacLellan WR *et al* "A novel Rb- and p300-binding protein inhibits transactivation by MyoD"  
*Mol Cell Biol* **20**:8903-8915 (2000) PMID: [11073990](#)
2. Nguyen DX *et al* "Acetylation regulates the differentiation-specific functions of the retinoblastoma protein"  
*EMBO J* **23**: 1609-1618 (2004) PMID: [15044952](#)

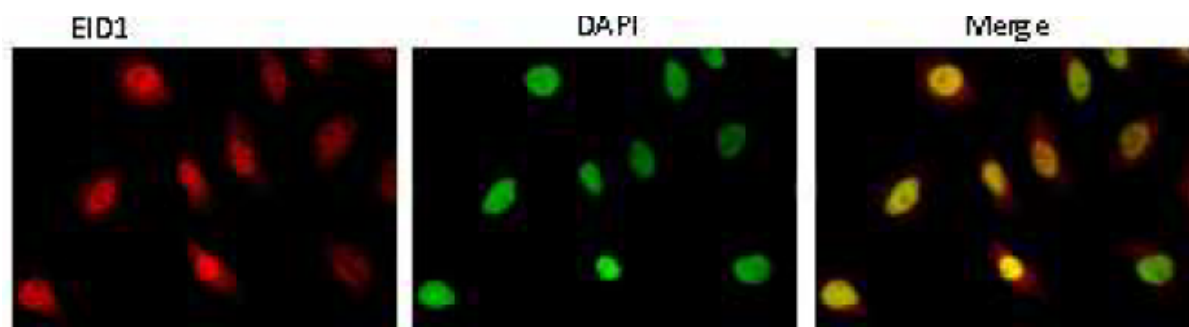


**Figure Identification of the EID1 protein by the monoclonal antibody clone #26 by Western blotting.**

Crude cell extracts of MCF7 cells (breast cancer cell line) transfected with control vector pCMV1 (lane 1) or the EID1 expression vector pcDNA3/EID1 (lane 2) were analyzed by Western blotting using anti-EID1 antibody clone #26 as the primary antibody and HRP-conjugated-mouse IgG as the secondary antibody. The EID1 protein was identified as a 21 kDa protein band as shown by an arrow.



**Related Product** [#71-190EX](#) anti-EID1 antibody, monoclonal (# 2)



**Fig. 2. Indirect immunofluorescence staining of EID1 protein by anti-EID1 antibody (clone 26) in HeLa cell.**

Hela cells grown

Fixation of the cells in 4% paraformaldehyde over night

Permeabilization in 0.25% Triton X-100/PBS for 10 min

Blocking in 1.5% BSA/PBS for 30 min

Incubation over night in anti-EID1 (clone 26) antibody diluted 1/1,000 by blocking buffer

Incubation for 60min in 2<sup>nd</sup> antibody, Goat anti-rabbit IgG conjugated with Alex 488 (1:1000 dilution)

Nuclei were stained with DAPI

The images show that majority of EID1 detected by this antibody is localized in nucleus and subfraction may be localized in cytoplasm, and that it may shuttle between them as described in some literatures.

Manufactured by BioAcademia Inc.



COSMO BIO CO., LTD.

Inspiration for Life Science

TOYO 2CHOME, KOTO-KU, TOKYO, 135-0016, JAPAN

URL: <http://www.cosmobio.co.jp>

e-mail: [export@cosmobio.co.jp](mailto:export@cosmobio.co.jp)

[Outside Japan] Phone : +81-3-5632-9617

[国内連絡先] Phone : +81-3-5632-9610

FAX : +81-3-5632-9618

FAX : +81-3-5632-9619