



## **Anti- KDM5A / RBP2 / JARID1A antibody, mouse monoclonal (9A6)**

RBP2 (1,690 aa, 192 kDa) was originally identified as a retinoblastoma binding protein. It is also known as JARID1A (Jumonji, AT rich interactive domain 1A) and KDM5A (gene name). RBP2 plays both negative and positive roles in RB-mediated transcriptional activation, depending on the kinds of genes and regulates differentiation by its function as an H3K4 histone demethylase.

### **Applications**

1. Western blotting (~1 µg/ml) Other applications were not tested.

**Immunogen:** A synthetic peptide corresponding to human RBP2, amino acids 1416-1434.

**Isotype:** Mouse IgG2a kappa

**Purification:** IgG fraction is purified from supernatant of culture in serum-free medium under mild conditions by proprietary chromatography.

**Form:** 1mg/ml in PBS, 50% glycerol, filter-sterilized

**Size:** 50ug

**Specificity:** Specific to human and mouse RBP2. Can detect endogenous levels of RBP2.

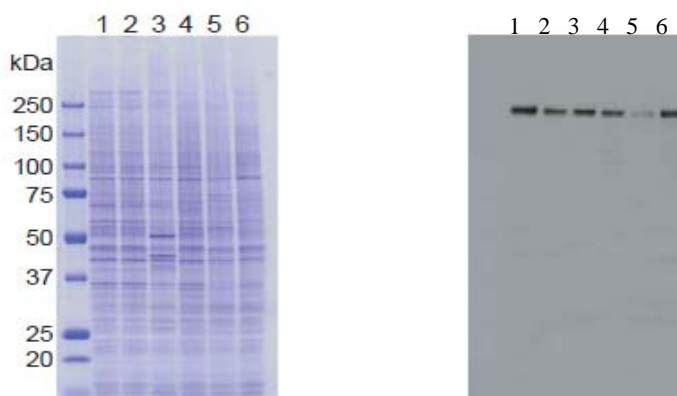
**Storage:** Sent at 4°C or -20°C and stored at -20°C

**Data Link** UniProtKB/Swiss-Prot [P29375](#) (KDM5A\_HUMAN)  
UniProtKB/Swiss-Prot [Q3UXZ9](#) (KDM5A\_MOUSE)

### **Figure Identification of RBP2 in crude cell extracts by Western blotting with antibody 9A6.**

Samples: 1. HeLa control siRNA      2. HeLa RBP2 siRNA      3. MCF7      4. U2OS  
5. NIH3T3      6. J1 (mouse ES)

A. SDS-PAGE with CBB staining      B. Western blotting (detection: ECL)



**Related product:** [#71-177EX](#) anti-RBP2/ JARID1A antibody, mouse monoclonal (18E8)