



Anti-RanBPM / RanBP9 (human) antibody, rabbit serum

RanBPM (RanBP9) was identified as a protein that interacts with small GTP-binding protein, Ran, and forms a 670 kD multiprotein complex. The protein consists of 729 amino acids and is identified by Western blotting as an apparent molecular mass of 95 kD (see below). It is involved in nucleation of microtubules and controls cell growth by interacting with many protein factors.

This antiserum was raised by immunizing rabbit with a recombinant fusion protein containing the region of RanBPM from Phe133 to Tyr 229.

Applications

1. Western blotting (~ x 2,000 dilution)
2. Immunoprecipitation (assay dependent concentration)
3. Immunofluorescence staining (1/1,000 dilution)
4. Immunohistochemistry (1/200 dilution. Perform heat mediated antigen retrieval with citrate buffer pH 6 before formalin treated paraffin embedded sectioning)

Form: Undiluted antiserum added with 0.09% sodium azide

Size: 250 uL

Reactivity: human RanBPM. Although not tested, it is likely to react with other mammalian homologs because of high sequence homology of the antigen.

Storage : Shipped at 4°C or -20°C, and upon arrival, aliquot and store at -20°C.

Data Link UniProtKB/Swiss-Prot [Q96S59](#) (RANB9_HUMAN)

References This product has been used for the following references.

1. Nishitani H *et al* "Full-sized *RanBPM* cDNA encodes a protein possessing a long stretch of proline and glutamine within the N-terminal region, comprising a large protein complex" *Gene* **272**: 25-33 (2001) PMID: [11470507](#)
2. Umeda M *et al* "A novel nuclear protein, Twa1, and Muskelin comprise a complex with RanBPM" *Gene* **303**:47-54 (2003) PMID:[12559565](#)



COSMO BIO Co., LTD.
Inspiration for Life Science

Anti-RanBPM / RanBP9 (human) antibody, rabbit serum

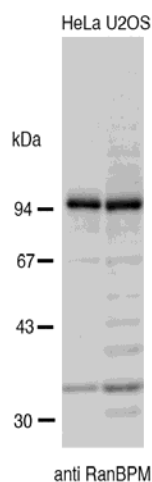


Fig. Western blotting of crude extract of HeLa and U2OS cells using the anti-BPM serum.

Related product: Expression plasmid of GFP-RanBPM cDNA is available upon request.

#71-001-1 pEGFP-C2-RanBPM

For research use only. Not for clinical diagnosis.

Manufactured by BioAcademia Inc.



COSMO BIO Co., LTD.
Inspiration for Life Science

TOYO 2CHOME, KOTO-KU, TOKYO, 135-0016, JAPAN

URL: <http://www.cosmobio.co.jp>

e-mail: export@cosmobio.co.jp

[Outside Japan] Phone : +81-3-5632-9617

[国内連絡先] Phone : +81-3-5632-9610

FAX : +81-3-5632-9618

FAX : +81-3-5632-9619