



**POLYCLONAL ANTIBODY**

*For research use only. Not for clinical diagnosis.*

**Catalog No. BAM-71-001-EX**

**Anti-RanBPM**

**BACKGROUND**

RanBPM (RanBP9) was identified as a protein that interacts with small GTP-binding protein, Ran, and forms a 670 kD multiprotein complex. The protein consists of 729 amino acids and is identified by Western blotting as an apparent molecular mass of 95 kD (see below). It is involved in nucleation of microtubules and controls cell growth by interacting with many protein factors.

This antiserum was raised by immunizing rabbit with a recombinant fusion protein containing the region of RanBPM from Phe133 to Tyr 229.

<b>Product type</b>	Primary antibodies
<b>Host</b>	Rabbit
<b>Source</b>	Serum
<b>Form</b>	Liquid
<b>Volume</b>	Undiluted antiserum added with 0.09% sodium azide 50 µl
<b>Concentration</b>	
<b>Specificity</b>	RanBPM
<b>Antigen</b>	RanBPM
<b>Isotype</b>	

**Application notes** WB, IP, Indirect immuno-staining of RanBPM in cells  
**Recommended use**

**Recommended dilutions**

Western blotting: ~ x 2,000 dilution

Optimal dilutions/concentrations should be determined by the end user.

Data Link: UniProtKB/Swiss-Prot [Q96S59](#) (RANB9\_HUMAN)

**Staining Pattern**

**Cross reactivity** human RanBPM.

Although not tested, it is likely to react with other mammalian homologs because of high sequence homology of the antigen.

**Storage** 4°C

**References** This product has been used for the following references.

- 1) Nishitani H *et al* "Full-sized RanBPM cDNA encodes a protein possessing a long stretch of proline and glutamine within the N-terminal region, comprising a large protein complex" *Gene* **272**: 25-33 (2001) PMID: [11470507](#)
- 2) Umeda M *et al* "A novel nuclear protein, Twa1, and Muskelin comprise a complex with RanBPM" *Gene* **303**:47-54 (2003) PMID: [12559565](#)

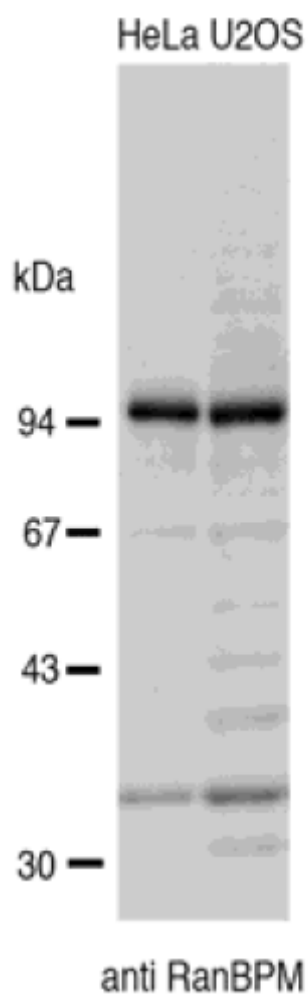


Fig. Western blotting of crude extract of HeLa and U2OS cells using the anti-BPM serum.

**Related Products**

BAM-71-001-1-EX pEGFP-C2-RanBPM

*For research use only. Not for clinical diagnosis.*

Manufactured by BioAcademia, Inc.



**COSMO BIO Co., LTD.**

Inspiration for Life Science

TOYO 2CHOME, KOTO-KU, TOKYO, 135-0016, JAPAN

[http://www.cosmobio.co.jp/index\\_e.asp](http://www.cosmobio.co.jp/index_e.asp)

E-mail: [export@cosmobio.co.jp](mailto:export@cosmobio.co.jp)

Phone : +81-3-5632-9617

FAX : +81-3-5632-9618