



POLYCLONAL ANTIBODY

*For research use only. Not for clinical diagnosis.***Catalog No. BAM-70-453-EX****Anti- DDX 18****BACKGROUND**

DDX18 protein (670aa, 75.4KDa) is a putative ATP-dependent RNA helicase since it possesses a DEAD box motif, characterized by the conserved motif, Asp-Glu-Ala-Asp (DEAD). RNA helicases which may play a role in ribosome biogenesis. DDX18 acts as a cofactor for XPO1-mediated nuclear export of incompletely spliced HIV-1 Rev RNAs. It was also involved in HIV-1 replication and interacts specifically with hepatitis C virus core protein resulting in a change in intracellular location.

Product type	Primary antibodies
Antigen	Purified Human DDX18 fused with GST
Host	Rabbit
Clone	-
Isotype	-
Source	Serum
Form	Undiluted anti rabbit serum added with 0.05 % sodium azide
Concentration	-
Volume	100 ul
Label	-
Specificity	Reacts with DDX18 of human and rodents.
Cross reactivity	Human, Rodents
Storage	Shipped at 4°C. Upon arrival aliquot and store at -20°C or below.
Other	Data Link : UniProtKB/Swiss-Prot Q9NVP1 (DDX18_HUMAN)

Application notes	WB, IF Other applications have not been tested. Recommended dilutions Western blotting (1/1,000 – 1/2,000 fold dilution) Immunofluorescent staining (1/500 fold dilution) Optimal dilutions/concentrations should be determined by the end user.
--------------------------	---

References	1) Sekiguchi T et al "NOP132 is required for proper nucleolus localization of DEAD-box RNA helicase DDX47." <i>Nucleic. Acid. Res.</i> 34 : 4593-4606 (2006) PMID: 16963496
-------------------	--

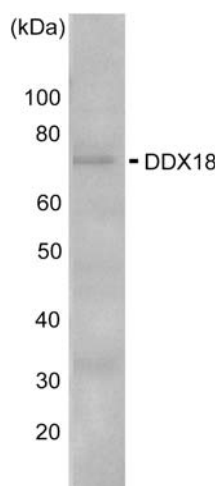


Fig.1 Western blot analysis of DDX3 in the whole cell extracts of HeLa cells (10mg) with anti -DDX18 antibody at 1,000 fold dilution

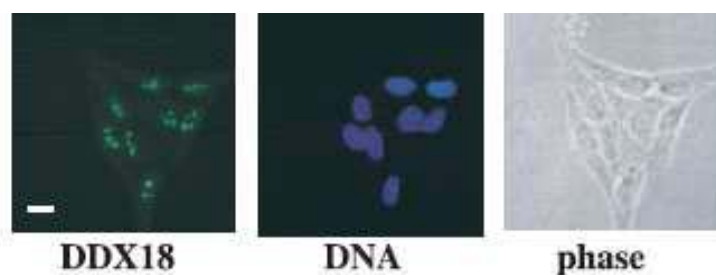


Fig.2 Immunostaining of DDX18 in HeLa cells with anti DDX18 antibody followed by FITC-conjugated anti-rabbit IgG second antibody. DNA was stained with Hoechst dye.

For research use only. Not for clinical diagnosis.

Manufactured by BioAcademia, Inc.



COSMO BIO CO., LTD.

Inspiration for Life Science

TOYO 2CHOME, KOTO-KU, TOKYO, 135-0016, JAPAN

URL: <http://www.cosmobio.co.jp>

e-mail: export@cosmobio.co.jp

[Outside Japan] Phone : +81-3-5632-9617

[国内連絡先] Phone : +81-3-5632-9610

FAX : +81-3-5632-9618

FAX : +81-3-5632-9619