



MONOCLONAL ANTIBODY

For research use only. Not for clinical diagnosis.

Catalog No. 70-400

anti-U1 snRNP C

BACKGROUND

The **spliceosomal U1C protein** is critical to the initiation and regulation of precursor messenger RNA (pre-mRNA) splicing, as part of the U1 small nuclear ribonucleoprotein particle (**snRNP**). U1C is needed for efficient complex formation of U1 snRNP with a 5' splice site.

The antibody was produced from the hybridoma cultured in serum-free medium and purified under mild conditions by propriety chromatography processes.

Product type	Primary antibodies
Host	Mouse
Source	Supernatant
Form	Liquid
Volume	Purified monoclonal antibody (IgG) 1mg/ml in PBS, 50% glycerol, filter-sterilized
Concentration	100 µg
Specificity	Mouse U1C
Antigen	Recombinant GST-fused mouse U1C (full length)
Isotype	Rat IgG 2a kappa

Application notes WB, IHC, ELISA Other applications are not tested.

Recommended use

Recommended dilutions

Optimal dilutions/concentrations should be determined by the end user.

Staining Pattern

Cross reactivity Human, simian U1C. Other species are not tested.

Storage -20°C (For prolonged -70°C)

References Swiss-Prot Q62241

1) Muto, Y. et al. (2004) "The structure and biochemical properties of the human spliceosomal protein U1C." J Mol Biol 341: 185-198 PMID: 15312772

2) Pomeranz Krummel, D.A. et al. (2009) "Crystal structure of human spliceosomal U1 snRNP at 5.5Å resolution." Nature 458: 475-480 PMID: 19325628

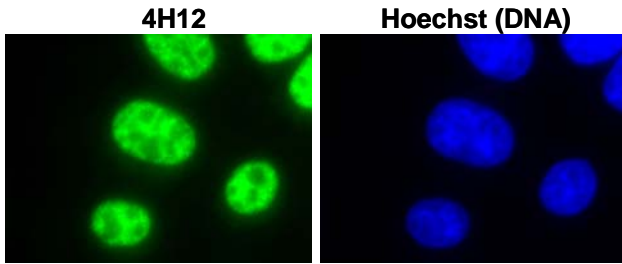


Fig.1 Immunofluorescent staining of L929 (mouse) cells with antibody 4H12.

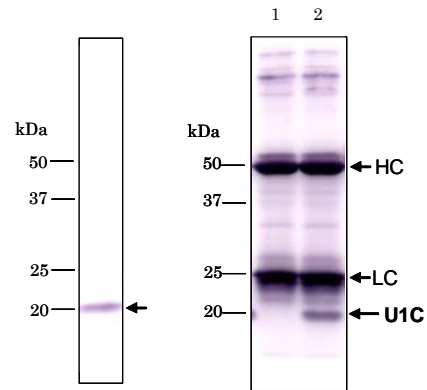


Fig.2 Detection of U1C protein in HeLa total cell extract by Western blotting with antibody 4H12.

Fig.3 Immunoprecipitation of U1C protein with 4H12. lane1: no extract lane2: HeLa total extract HC, LC ; IgG heavy & light chain

For research use only. Not for clinical diagnosis.

Manufactured by BioAcademia, Inc.



COSMO BIO Co., LTD.
Inspiration for Life Science

TOYO 2CHOME, KOTO-KU, TOKYO, 135-0016, JAPAN

URL: <http://www.cosmobio.co.jp>

e-mail: export@cosmobio.co.jp

[Outside Japan] Phone : +81-3-5632-9617

[国内連絡先] Phone : +81-3-5632-9610

FAX : +81-3-5632-9618

FAX : +81-3-5632-9619