



## Anti-Nup153

### BACKGROUND

The nuclear pore complex (NPC) regulates cargo transport between the cytoplasm and the nucleus. Nup (Nucleoporin) 153 is a large (153kDa) O-linked glycoprotein which is a component of the basket structure located on the nucleoplasmic face of NPC. Nup153 plays a critical role in nuclear export of RNA and proteins. The antibody was purified from the serum-free cultured medium of the hybridoma under mild conditions by propriety chromatography processes.

<b>Product type</b>	Primary antibodies
<b>Host</b>	Rat
<b>Source</b>	Supernatant
<b>Form</b>	Liquid
<b>Volume</b>	Purified monoclonal antibody (IgG) 1mg/ml in PBS, 50% glycerol, filter-sterilized
<b>Concentration</b>	200ug
<b>Specificity</b>	1mg/ml
<b>Specificity</b>	Specific to human, mouse, rat and monkey Nup153 proteins. Epitope: 610-1191 aa (Zn finger and FG repeats domain)
<b>Antigen</b>	Recombinant GST-fused rat Nup153 (610-1191aa)
<b>Clone</b>	R4C8
<b>Isotype</b>	Rat IgG2ak

**Application notes** WB, ELISA, IC Not tested for other application

### Recommended use

Western Blotting: 160 kDa single band in Hela cell extract

Additional comments: When injected into the nucleus, R4C8 accumulates into the nuclear pores of Hela cells. R4C8 works in immuno-cytochemistry very well (Fig. 2 & 3).

### Recommended dilutions

Optimal dilutions/concentrations should be determined by the end user.

### Staining Pattern

**Cross reactivity** Other species are not tested.

**Storage** -20°C (long period, -70°C)

**References** 1) Ullman, K.S. et al. (1999) "The nucleoporin Nup153 plays a critical role in multiple types of nuclear export." Molecular Biology of the Cell 10: 649-664.

2) Lim, R.Y. et al. (2007). "Nanomechanical basis of selective gating by the nuclear pore complex." Science 318: 640-643.

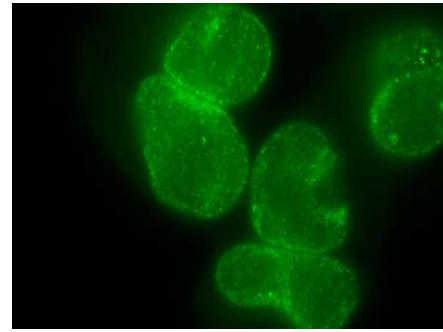
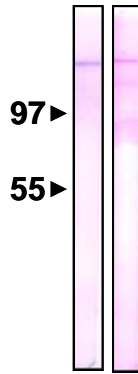


Fig.1 Detection of Nup153 by Western blotting with antibody R4C8. Sample is the nuclear membrane fraction of HeLa cells (Left) and NIH3T3 cells (Right).

Fig.2 Immunofluorescent staining of HeLa cells with antibody R4C8.

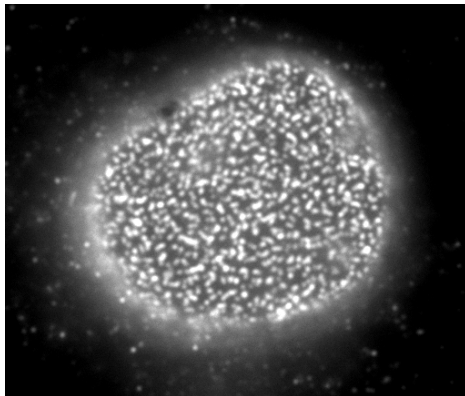


Fig.3 Immunofluorescent staining of rat neuron with antibody R4C8. The dots are Nup153.

*For research use only. Not for clinical diagnosis.*

Manufactured by BioAcademia Inc.



COSMO BIO Co., LTD.

Inspiration for Life Science

TOYO 2CHOME, KOTO-KU, TOKYO, 135-0016, JAPAN

URL: <http://www.cosmobio.co.jp>

e-mail: [export@cosmobio.co.jp](mailto:export@cosmobio.co.jp)

[Outside Japan] Phone : +81-3-5632-9617

[国内連絡先] Phone : +81-3-5632-9610

FAX : +81-3-5632-9618

FAX : +81-3-5632-9619