

Anti- Centrin 1 antibody, affinity purified (rabbit polyclonal)

70-110 100 μ g

Storage: Shipped at 4°C and store at -20°C

Reactivity: Reacts with human, mouse, rat, hamster and xenopus

Applications

- 1) Western blotting (~ 1/1,000 dilution)
- 2) Immunofluorescent staining (1/100~1/1,000 dilution)

Immunogen: Synthetic peptide conjugated to KLH, with a Cysteine residue linker corresponding to C terminal amino acids 155-168 (C-GEVNEEEFLRIMKK) of Human centrin-1

Purity: Affinity-purified with the immunogen peptide

Form: 1mg/ml in PBS, 50% glycerol. Filter-sterilized. Azide and carrier free.

Function: Centrin 1 (human; 172 aa, MW; 19,570) plays a fundamental role in microtubule organizing center structure and function. Centrins, also known as caltractins, are a family present in the centrioles and pericentriolar lattice. Human centrin genes are CETN1, CETN2 and CETN3. Centrins are required for duplication of centrioles. They may also play a role in severing of microtubules by causing calcium-mediated contraction

Database Link: UniProtKB [Q12798](#) (CETN1_HUMAN). GeneCard [CETN1](#).

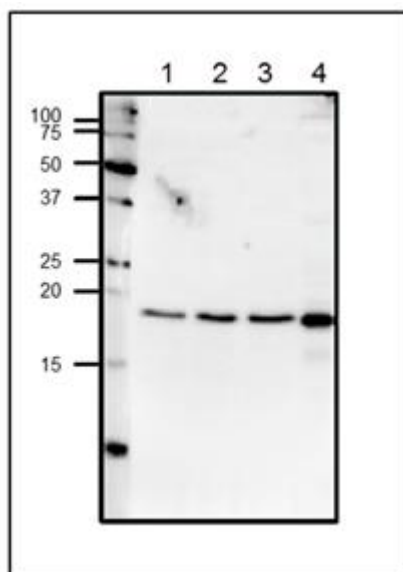


Fig.1 Western blot analysis of endogenous centrin-1 in crude lysates.

1. HeLa cells (20 μ g)
2. MCF7 cells (20 μ g)
3. NIH3T3 cells (20 μ g)
4. Xenopus eggs (50 μ g)

The anti-Centrin 1 antibody was used at 1/1,000 Dilution. Molecular mass is 19.6 kDa



COSMO BIO CO., LTD.

TOKYO JAPAN

TEL : (81)3-5632-9617

FAX : (81)3-5632-9618

e-mail : export@cosmobio.co.jp



www.cosmobio.com

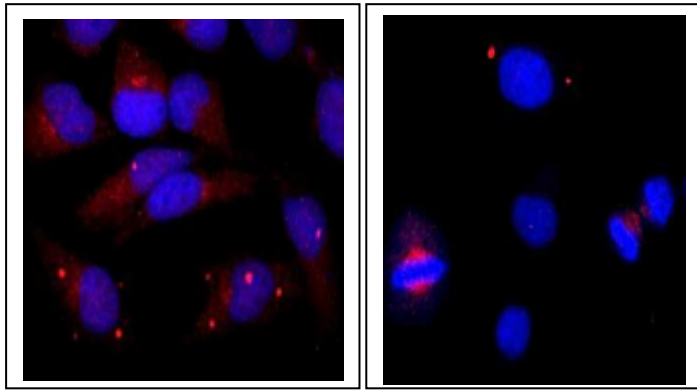


Fig.2. Immunofluorescence staining of centrin-1 protein in HeLa cells with anti-Centrin 1 antibody.

Growing HeLa cells were fixed with 4% paraformaldehyde, and permeabilized with 0.25% Triton X-100. Anti-Centrin 1 antibody was used at 1/100 dilution. As 2nd antibody, goat anti-rabbit IgG conjugated with Alex 488 (red) at 1/1,000 dilution. DNA was stained with DAPI (blue).

