



## **Anti- Centrin 1 antibody, affinity purified (rabbit polyclonal)**

Centrin 1 ( human; 172 aa, MW; 19,570) plays a fundamental role in microtubule organizing center structure and function. Centrin, also known as caltractins, are a family present in the centrioles and pericentriolar lattice. Human centrin genes are CETN1, CETN2 and CETN3. Centrin, are required for duplication of centrioles. They may also play a role in severing of microtubules by causing calcium-mediated contraction

### **Applications**

- 1) Western blotting (~ 1/1,000 dilution)
- 2) Immunofluorescent staining (1/100~1/1,000 dilution)

Not tested with other applications

**Reactivity:** Reacts with human centrin-1. Not tested with other species.

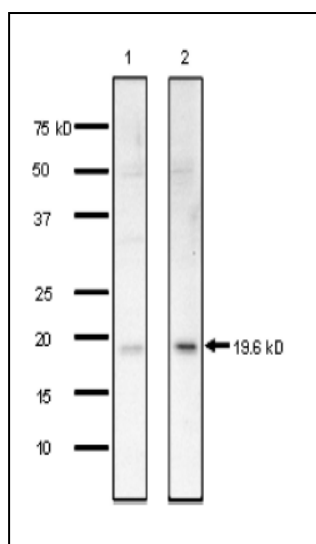
**Immunogen:** C-terminal peptide of human Centrin-1; 155C-GEVNEEEEFLRIMKK168 conjugated with KLF

**Purity:** Affinity-purified with the immunogen peptide

**Form:** 1mg/ml in PBS, 50% glycerol. Filter-sterilized.

**Size:** 100 ug

**Storage:** Shipped at 4°C or -20°C. Upon arrival, aliquot and store at -20°C

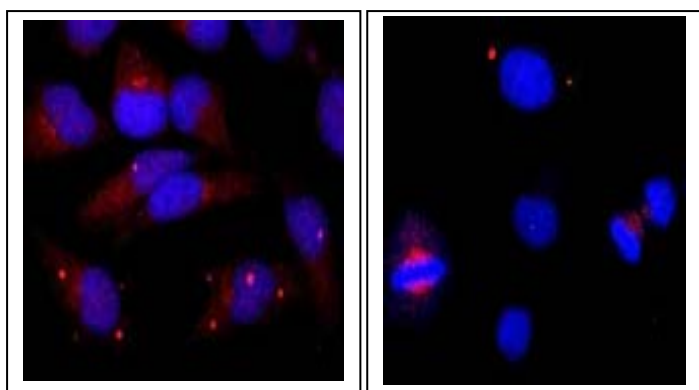


**Fig.1 Identification of Centrin-1**  
**in the crude extracts of human cells by**  
**Western blotting with this antibody**  
HeLa cells (lane 1, 10 µg) and MCF-7  
cells (lane 2, 20 µg). The antibody was  
used at 1/1000 dilution.



COSMO BIO CO., LTD.  
Inspiration for Life Science

Anti- Centrin 1 antibody, affinity purified (rabbit polyclonal)



**Fig.2. Immunofluorescence staining of Centrin 1 protein in HeLa cells with anti-Centrin 1 antibody.**

Growing HeLa cells were fixed with 4% paraformaldehyde, and permeabilized with 0.25% Triton X-100. Anti-Centrin 1 antibody was used at 1/100 dilution. As 2<sup>nd</sup> antibody, goat anti-rabbit IgG conjugated with Alex 488 (red) at 1/1,000 dilution. DNA was stained with DAPI (blue).

*For research use only. Not for clinical diagnosis.*

Manufactured by BioAcademia Inc.



COSMO BIO CO., LTD.  
Inspiration for Life Science

TOYO 2CHOME, KOTO-KU, TOKYO, 135-0016, JAPAN

URL: <http://www.cosmobio.co.jp>

e-mail: [export@cosmobio.co.jp](mailto:export@cosmobio.co.jp)

[Outside Japan] Phone : +81-3-5632-9617

[国内連絡先] Phone : +81-3-5632-9610

FAX : +81-3-5632-9618

FAX : +81-3-5632-9619