



## Anti- DSN1 / Mis13 antibody, rabbit polyclonal

70-101 100 ul

DSN1 / Mis13 (human: 356 aa. 40 kDa) is part of the MIS12 complex which is required for normal chromosome alignment and segregation and kinetochore formation during mitosis. Defects in kinetochore proteins often lead to aneuploidy and cancer. It is a component of the MIS12 complex composed of MIS12, DSN1, NSL1 and PMF1 and also interacts with CASC5, CBX3 and CBX5. Note that DSN1 protein is expressed in actively dividing cells.

### Applications:

- 1) Western blotting (1,000 fold dilution)
- 2) Immunofluorescence-staining (1,000 fold dilution,)

**Immunogen:** Recombinant N-terminal half of human DSN1 / Mis13 (c20orf172) fused with GST

**Reactivity:** Reacts with human DSN1/Mis13 protein. Predicted to react with rodents.

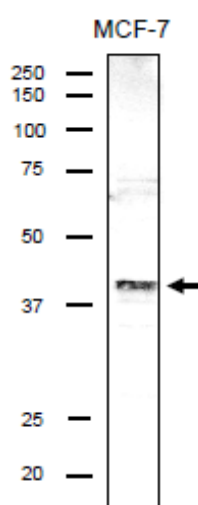
**Antibody:** Rabbit antiserum added with 0.05% sodium azide. Anti-GST antibodies have been removed from the serum by passing through an affinity column conjugated with GST

**Storage:** Shipped at 4 °C or -20 °C. Upon arrival, aliquot and store at -20 °C.

**Data Link:** UniProtKB/Swiss-Prot [Q9H410](#) (DSN1\_HUMAN)

**Reference:** This antibody has been used in the following reference

Obuse C *et al* "A conserved Mis 12 centromere complex is linked to heterochromatic HP1 and outer kinetochore protein Zwint-1" *Nat Cell Biol* **6**: 1135-1141 (2004) PMID: [15502821](#)



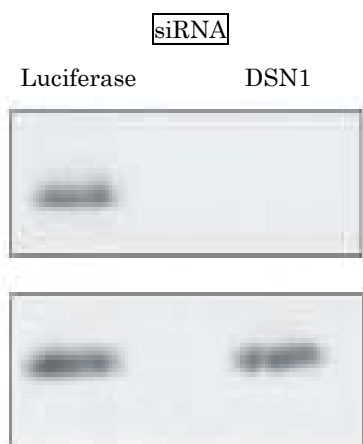
**Fig.1 Identification of DSN1 protein in the crude lysate of MCF-7 cells by using anti-DSN antibody.**

The cell lysate (20 µg) was separated by SDS-PAGE and analyzed by western blotting with anti-DSN antibody at 1/1,000 dilution. As the second antibody, anti-rabbit IgG antibody conjugated with HRP (Abcam, ab97051) was used at 10,000 dilution. Note that DSN1 protein is expressed in actively dividing cells.

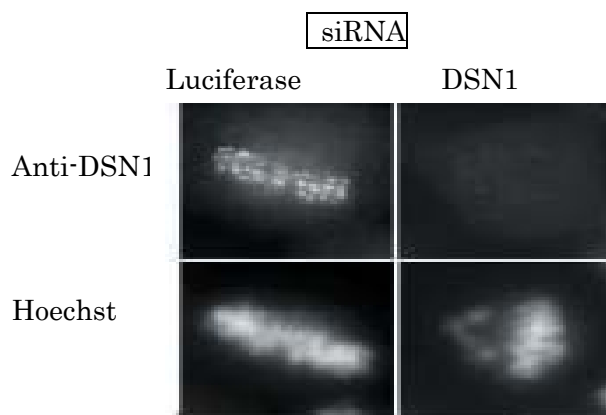


COSMO BIO CO., LTD.  
Inspiration for Life Science

Bio  
Academia



**Fig.2 Western blot analysis of DSN1 protein in HeLa cell lysate with this antibody.** Expression of siRNA for DSN1 for 24 h greatly reduced DSN1 in the cells. Luciferase siRNA was used as a control. Antibody was used at 1/1,000 dilution.



**Fig.3 Immunofluorescence staining of HeLa cell chromosome with this antibody.** Expression of siRNA for DSN1 for 24 h greatly reduced DSN expression in the cell. Luciferase siRNA was used as a control. Antibody was used at 1/1,000 dilution. Mitotic cells were accumulated by nocodazole treatment and chromosomes were spread on coverglass.



COSMO BIO CO., LTD.  
Inspiration for Life Science

TOYO 2CHOME, KOTO-KU, TOKYO, 135-0016, JAPAN

URL: <http://www.cosmobio.co.jp>

[Outside Japan] Phone : +81-3-5632-9617 [ 国内連絡先 ] Phone : 03-5632-9610

FAX : +81-3-5632-9618

FAX : 03-5632-9619