



Catalog No. 70-071

Anti-DNA polymerase eta (human) antibody, mouse monoclonal (5H10)

Key Words: DNA polymerase eta, *POLH*, Y-family DNA polymerase, Xeroderma pigmentosum variant type (XPV), Translesion DNA synthesis, Error-prone DNA polymerase, UV-sensitive, DNA damage tolerance, Skin cancer

Function: DNA polymerase eta (713 aa, 78 kDa) is specifically involved in DNA repair. Plays an important role in translesion synthesis, where the normal high fidelity DNA polymerases cannot proceed and DNA synthesis stalls. Plays an important role in the repair of UV-induced pyrimidine dimers. Depending on the context, it inserts the correct base, but causes frequent base transitions and transversions. May play a role in hypermutation at immunoglobulin genes. Forms a Schiff base with 5'-deoxyribose phosphate at abasic sites, but does not have lyase activity. Targets POLI (Pol iota) to replication foci.

Involvement in disease: [Xeroderma pigmentosum variant type](#) (XPV) [MIM:[278750](#)]: An autosomal recessive pigmentary skin disorder characterized by solar hypersensitivity of the skin, high predisposition for developing cancers on areas exposed to sunlight and, in some cases, neurological abnormalities. XPV shows normal nucleotide excision repair, but an exaggerated delay in recovery of replicative DNA synthesis. Most patients with the variant type of xeroderma pigmentosum do not develop clinical symptoms and skin neoplasias until a later age. Clinical manifestations are limited to photo-induced deterioration of the skin and eyes.

Immunogen: Human recombinant full-size Pol eta tagged with His6.

Applications: Western blot. Not tested for other application

Reactivity: Human Pol eta protein. Not tested in other species

Product: Produced in serum-free medium by mouse hybridoma clone 5H10 and purified by ion-exchange chromatography processes under mild conditions. Purity; 90~95% as judged from SDS-PAGE

Form: 1 mg/ml in PBS, 50% glycerol. Filter-sterilized. Azide- and carrier protein-free.

Size: 100 ug

Isotype: Mouse IgG1 (kappa)

Storage: Sent at 4C or at -20C. Spin-down and store at -20C

Data links: [SwissProt: Q9Y253](#) Human
[Entrez Gene: 5429](#) Human



Anti-DNA polymerase eta(human) antibody

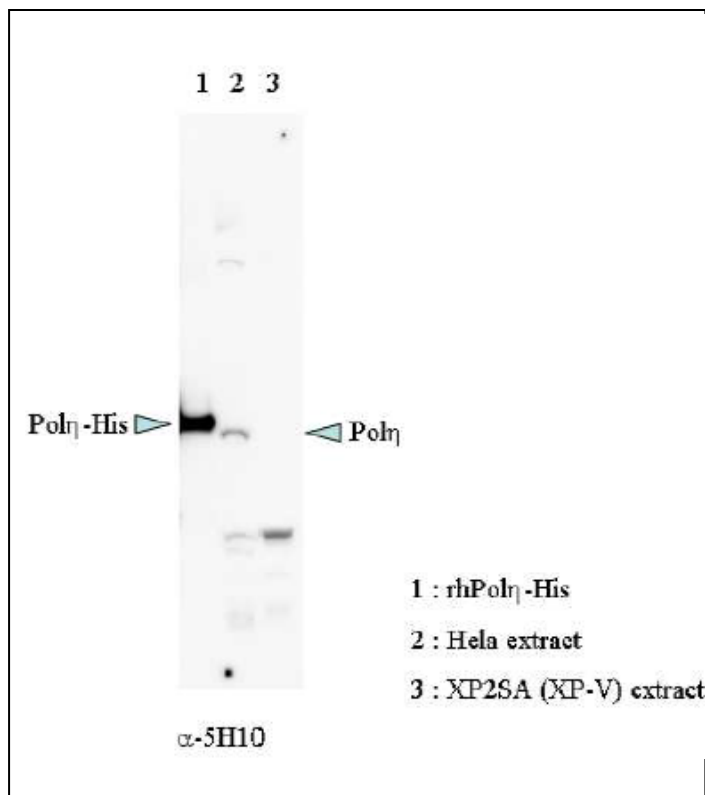


Figure. Identification of Pol eta in whole cell extract of HeLa cells by western blot with anti-Pol eta antibody (5H10).

Lane 1: Recombinant full-size Pol eta with His6 tag at C-terminus. Positive control.

Lane 2: Whole cell extract of HeLa cells. ~40 ug protein applied. Positive control

Lane 3: Whole cell extract of XP2SA (XP-V) cells. ~40 ug protein applied. Negative control

Pol eta is detected at ~80 kDa position. 8% gel was used.

Data by courtesy of Prof. F. Hanaoka and Prof. C. Masutani at Osaka University.

For research use only. Not for clinical diagnosis.

Manufactured by BioAcademia, Inc.



COSMO BIO CO., LTD.
Inspiration for Life Science

TOYO 2CHOME, KOTO-KU, TOKYO, 135-0016, JAPAN

http://www.cosmobio.co.jp/index_e.asp

Phone : +81-3-5632-9617

E-mail: export@cosmobio.co.jp

FAX : +81-3-5632-9618