



Anti-human Rad18

BACKGROUND

The Rad6-Rad18 pair of genes plays a critical role in post-replication repair of damaged DNA. Rad6 protein functions as an E2 enzyme and Rad18 as a ubiquitin ligase (E3) which ubiquitinates PCNA. Rad18 recruits translesion DNA polymerases to damaged DNA (ref 1~3).

Product type	Primary antibodies
Host	Rabbit
Source	Serum
Form	Liquid
Volume	200 ug
Concentration	Polyclonal rabbit IgG fraction pre-adsorbed with GST affinity column. 2 mg/ml in PBS, 50% glycerol, 0.09% sodium azide
Specificity	Human Rad18. Not reactive to mouse Rad18
Antigen	GST-fusion protein containing 113 carboxyl terminal of human Rad18
Clone	
Isotype	

Application notes WB, IF, IP

Recommended use

Recommended dilutions

Western Blotting: ~1/ 1000

Optimal dilutions/concentrations should be determined by the end user.

Staining Pattern

Cross reactivity

Storage -20°C

References

- 1) Miyase S. et al. J. Biol. Chem. 280, 515-524 (2005)
- 2) Tateishi S. et al. PNAS 97, 7927-7932 (2000)
- 3) Watanabe K. et al. EMBO J. 23, 3886-3896

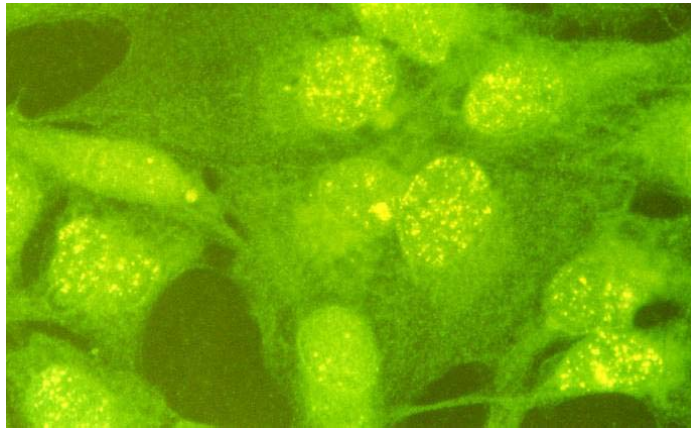


Fig 1. Indirect immuno-fluorescence staining of Rad18 protein in GM637 cells. Rad18 protein is stained as yellow dots in nuclei.

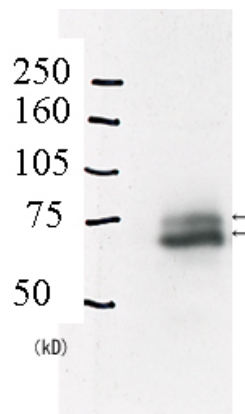


Fig 2. Identification of Rad18 protein in crude extract of A549 cells by western blotting. The lower thick band is native Rad18 and the upper thin band is mono-ubiquitinated Rad18 protein (ref. 1)

For research use only. Not for clinical diagnosis.

Manufactured by BioAcademia Inc.



COSMO BIO Co., LTD.

Inspiration for Life Science

TOYO 2CHOME, KOTO-KU, TOKYO, 135-0016, JAPAN

URL: <http://www.cosmobio.co.jp>

e-mail: export@cosmobio.co.jp

[Outside Japan] Phone : +81-3-5632-9617

[国内連絡先] Phone : +81-3-5632-9610

FAX : +81-3-5632-9618

FAX : +81-3-5632-9619



抗ヒト Rad18

BACKGROUND

Rad6-Rad18 遺伝子群は DNA 損傷の複製後修復に関与し、Rad18 タンパク質は DNA 損傷に応答して PCNA をモノユビキチン化するユビキチンリガーゼ活性を持ち (E3)、translesion 型 DNA ポリメラーゼを損傷部位にリクルートする活性をもつ (1)。

本抗体は GST タグをもつヒト Rad18 タンパク質の C 末端 122 アミノ酸領域を抗原としてウサギに免疫して得た抗血清から IgG 画分を精製し GST カラムを用いて抗 GST 抗体を除去したものである。

Product type	一次抗体
Host	ウサギ
Source	血清
Form	液状
Volume	200 ug
Concentration	精製 IgG 2 mg/ml in PBS, 50% glycerol, 0.09% sodium azide
Specificity	ヒト Rad18 タンパク質(マウス Rad18 とは反応しない)
Antigen	組換え体 GST-Rad18 (c-113 a.a.)タンパク質
Clone	
Isotype	

Application notes IF, IB, IP

Recommended use

Recommended dilutions

ウェスタンブロッティング: ~1/ 1000

Optimal dilutions/concentrations should be determined by the end user.

Staining Pattern

Cross reactivity

Storage -20°C

- References**
- 1) Miyase S. et al. J. Biol. Chem. 280, 515-524 (2005)
 - 2) Tateishi S. et al. PNAS 97, 7927-7932 (2000)
 - 3) Watanabe K. et al. EMBO J. 23, 3886-3896

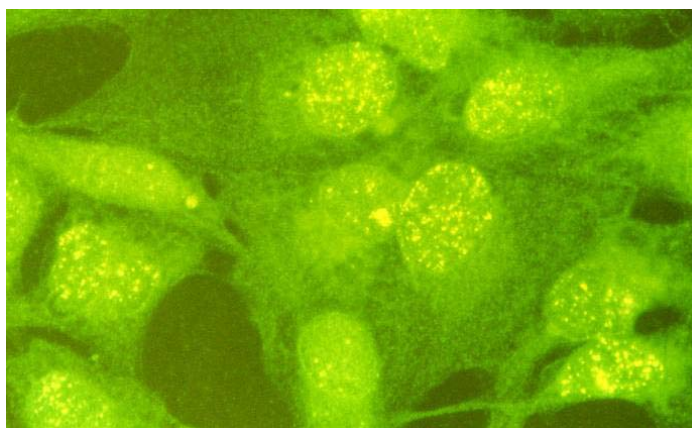


図1. 本抗体を用いた間接免疫染色法による Rad18 タンパク質の染色(核内の黄色のドット)。 GM637細胞。

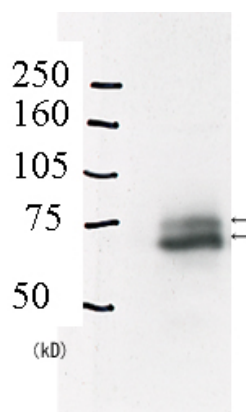


図2. 細胞(A549)粗抽出液中の Rad18 タンパク質のウエスタンブロットリング法による検出

For research use only. Not for clinical diagnosis.

Manufactured by BioAcademia, Inc.



COSMO BIO Co., LTD.

Inspiration for Life Science

TOYO 2CHOME, KOTO-KU, TOKYO, 135-0016, JAPAN

URL: <http://www.cosmobio.co.jp>

e-mail: export@cosmobio.co.jp

[Outside Japan] Phone : +81-3-5632-9617

[国内連絡先] Phone : +81-3-5632-9610

FAX : +81-3-5632-9618

FAX : +81-3-5632-9619