



POLYMONOCLONAL ANTIBODY

For research use only. Not for clinical diagnosis.

Catalog No. 70-015EX

Anti-Rad52 (human) antibody

BACKGROUND

Human **Rad52** protein is a functional and structural homolog of yeast **Rad52** protein which plays a major role in genetic recombination and recombination repair by mediating strand annealing between homologous DNA strands (Ref.1). **Rad52** functionally and physically interacts with Rad51 in recombination processes. It also interacts with oncogenes and tumor suppressors for the maintenance of genome stability (Ref.1).

The product was prepared by immunizing rabbit with the full-size recombinant **Rad52** protein expressed in *E. coli* and affinity-purified with the recombinant **Rad52**.

Using this anti-serum, **Rad52** protein (46 kD) was detected by Western blotting (Fig. 1) at 46 kD position. This antibody was successfully used for immunoprecipitation assay (Fig. 1).

Form	1 mg/ml PBS (20mM Na-phosphate pH7.5 , 0.15M NaCl), 50% glycerol
Volume	50µg
Concentration	
Specificity	
Antigen	A region of NS5a protein (the nucleotide sequence is shown in ref.4) of HCV genotype 1b expressed in <i>E.coli</i>

Application notes	1) Western blotting (x 2,000) 2) Immunoprecipitation 3) Detection of foci formation by indirect immunofluorescence method Other applications have not been tested. Optimal dilutions/concentrations should be determined by the end user.
Data Link	Swiss-Prot P43351
Reactivity	Reacts with human and mammalian Rad52 protein
Storage	-20°C
References	Friedberg EC <i>et al DNA Repair and Mutagenesis</i> 2 nd ed., ASM Press (2006)
Related products	# 10-003EX Rad52 protein (human)



COSMO BIO CO., LTD.
Inspiration for Life Science

Anti-Rad52 (human) antibody

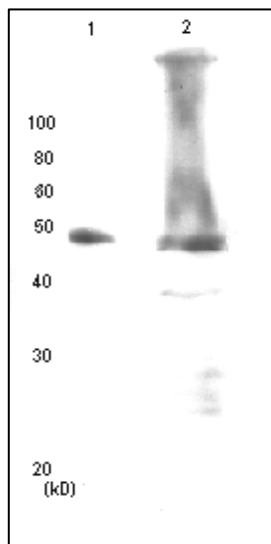


Fig.1 Western blot and immunoprecipitation of Rad52

Lane1: 1 ng/lane purified hRad52 protein (products code 10-003)

Lane2: immunoprecipitation sample (MCF')

For research use only. Not for clinical diagnosis.

Manufactured by BioAcademia Inc.



COSMO BIO CO., LTD.

Inspiration for Life Science

TOYO 2CHOME, KOTO-KU, TOKYO, 135-0016, JAPAN

URL: <http://www.cosmobio.co.jp>

e-mail: export@cosmobio.co.jp

[Outside Japan] Phone : +81-3-5632-9617

[国内連絡先] Phone : +81-3-5632-9610

FAX : +81-3-5632-9618

FAX : +81-3-5632-9619