



## Anti-HIV-1 Reverse Transcriptase Antibody, rabbit serum

HIV-1 reverse transcriptase is an RNA-dependent DNA polymerase of HIV-1(AIDS virus), subtype B origin (1). It also has RNaseH activity and is an enzyme indispensable for reproduction of AIDS virus.

Because full-size reverse transcriptase was used as immunogen, this antibody reacts any subtype of HIV-1.

### Applications

1. Western blotting
2. Dot blotting
3. Immunoprecipitation
4. ELISA.

**Immunogen:** Full-size functional recombinant HIV-1 expressed and purified from E. coli

**Form:** 0.09% sodium azide added to the antiserum

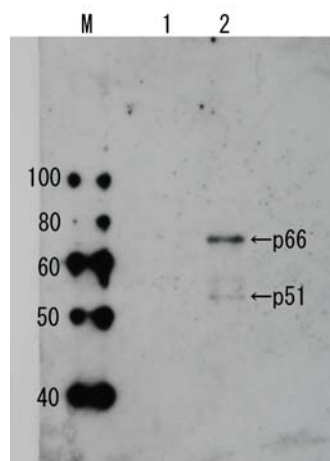
**Size:** 250 uL

**Storage:** Sent at 4°C or at -20°C and stored at -20°C

**Data Link** GenBank: [AAA44988.1](https://www.ncbi.nlm.nih.gov/nuclot/AAA44988.1)

**References :** The HIV-1 strain and immunogen has been described in the following references.

1. Adachi A *et al* "Production of acquired immunodeficiency syndrome-associated retrovirus in human and nonhuman cells transfected with an infectious molecular clone" *J Virol* **59**: 284 -291(1986) PMID: [3016298](https://pubmed.ncbi.nlm.nih.gov/3016298/)
2. Saitoh A *et al* "Overproduction of human immunodeficiency virus type I reverse transcriptase in Escherichia coli and purification of the enzyme" *Microbiol Immunol* **34**:509-521 (1990) PMID: [1699113](https://pubmed.ncbi.nlm.nih.gov/1699113/)



**Fig.1 Detection of HIV-1 reverse transcriptase in the extract of HIV-1 infected cells by Western blotting using anti-HIV transcriptase antibody.**

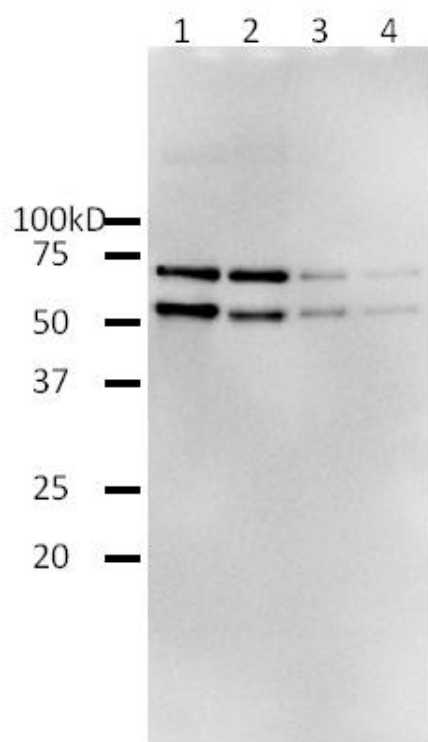
Lane 1: Extract of MT4 cells

Lane 2: Extract of MT4 cells infected with HIV-1 (LAI strain)

The antiserum was diluted 2,500 fold before use.



Anti-HIV-1 Reverse Transcriptase Antibody, rabbit serum



**Fig.2. Western blotting of functional recombinant full-length HIV-1 reverse transcriptase (BioAcademia 05-001) by using anti-HIV-1 Reverse Transcriptase antibody.**

1; 40 ng / lane

2; 20 ng / lane

3; 4 ng / lane

4; 2 ng /lane

Anti-HIV-1 RT antibody was used at 1/2,000 dilution. As second antibody, goat anti-rabbit IgG antibody conjugated with HRP was used at 1/5,000 dilution. ECL system was used.

*For research use only. Not for clinical diagnosis.*

Manufactured by BioAcademia Inc.



COSMO BIO CO., LTD.

Inspiration for Life Science

TOYO 2CHOME, KOTO-KU, TOKYO, 135-0016, JAPAN

URL: <http://www.cosmobio.co.jp>

e-mail: [export@cosmobio.co.jp](mailto:export@cosmobio.co.jp)

[Outside Japan] Phone : +81-3-5632-9617

[国内連絡先] Phone : +81-3-5632-9610

FAX : +81-3-5632-9618

FAX : +81-3-5632-9619