

## Anti-Shugoshin 1 (*S. pombe*) antibody

63-154 100 ul

Shugoshin 1 (Sgo1), a meiosis-specific protein, protects centromeric Rec8 from degradation during first meiotic division (meiosis I) in fission yeast *Schizosaccharomyces pombe* (1, 2). This protein appears at late prophase of meiosis I and is degraded at anaphase I. Heterochromatin protein Swi6 associates directly with Sgo1. A point mutation of Sgo1 (V242E), which abolishes the interaction with Swi6, impairs the centromeric localization and function of Sgo1. The forced centromeric localization of Sgo1 restores proper meiotic chromosome segregation in *swi6* $\Delta$  cells (3).

Using this antibody in Western blotting, the band of 37 kD was observed in wild type *S. pombe* MP111 extract (Fig 1).

### Applications

- 1) Western blotting (1,000 fold dilution)
- 2) Immunofluorescence staining (100 fold dilution)

**Antibody:** Recombinant Shugoshin 1 was used as immunogen for rabbit and affinity purified with the recombinant Shugoshin1.

**Form:** 0.2 mg/ml affinity purified anti-Shugoshin 1 antibody in 1 mg/ml BSA, PBS (pH 7.2), 50% glycerol, filter-sterilized, azide free

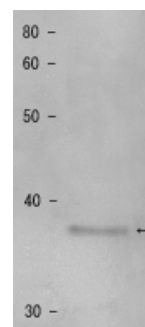
**Storage:** -20°C

**Data Link** UniProtKB/Swiss-Prot [Q9P7A0](#) (SGO1\_SCHPO)

**References:** This product was used in references 2 and 3.

1. Watanabe Y and Kitajima TS "Shugoshin protects cohesion complexes at centromeres" *Philos Trans R Soc Lond B Biol Sci* **360**: 515-521 (2005)  
Review PMID: [15897177](#)
2. Kitajima TS *et al* "The conserved kinetochore protein shugoshin protects centromeric cohesion during meiosis" *Nature* **427**: 510-517 (2004) PMID: [14730319](#)
3. Yamagishi Y *et al* "Heterochromatin links to centromeric protection by recruiting shugoshin" *Nature* **455**: 251-255 (2008) PMID: [18716626](#)

Fig.1



### Fig.1 Detection of shugoshin 1 protein by Western blotting.

Sample: Extract of MP111 cells.

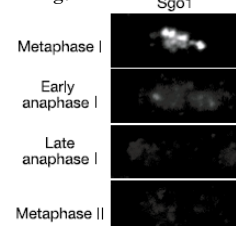
The antiserum was diluted 1000 fold before use.

### Fig.2 Immunostaining of Shugoshin 1 in synchronized diploid fission yeast.

Sgo 1 protein was detected with this antibody and

Alexa-488-conjugated anti-rabbit antibody.

Fig.2



**Related product:** Anti-Swi6 (*S. pombe*) antibody, rabbit ([63-101](#), [63-102](#))



COSMO BIO CO., LTD.

TOKYO JAPAN

TEL : (81)3-5632-9617

FAX : (81)3-5632-9618

e-mail : [export@cosmobio.co.jp](mailto:export@cosmobio.co.jp)



[www.cosmobio.com](http://www.cosmobio.com)