



POLYCLONAL ANTIBODY

*For research use only. Not for clinical diagnosis.*

**Catalog No. 63-153EX**

## Anti-Mrc1 (*S. pombe*) antibody

### BACKGROUND

**Mrc1** (Mediator of replication checkpoint 1) is a S-phase checkpoint protein of *Schizosaccharomyces pombe* found at replication forks, required for phosphorylation and activation of Cds1 during DNA replication stress, where it forms a replication pausing complex, and is phosphorylated by Rad3 and Tel1 kinases. The phosphorylated form of **Mrc1** is detected by a change in the electrophoretic mobility.

<b>Product type</b>	Primary antibodies
<b>Host</b>	Rabbit
<b>Source</b>	Serum
<b>Form</b>	Undiluted rabbit antiserum added with 0.05 % sodium azide
<b>Volume</b>	250 $\mu$ L
<b>Concentration</b>	
<b>Specificity</b>	
<b>Antigen</b>	Purified recombinant protein containing amino acids 1~317 of Mrc1

---

<b>Application notes</b>	Western blotting (x 5,000 dilution) Other applications have not been tested. Optimal dilutions/concentrations should be determined by the end user.
--------------------------	---

<b>Data Link</b>	Swiss-Prot <a href="#">Q9P7T4</a>
<b>Cross reactivity</b>	
<b>Storage</b>	Shipped at 4 °C and store at -20°C
<b>References</b>	1. Zhao H <i>et al</i> "Replication checkpoint protein Mrc1 is regulated by Rad3 and Tel1 in fission yeast." <i>Mol Cell Biol</i> <b>23</b> : 8395-8403 (2003) PMID: <a href="#">14585996</a>

(This product is described and used in Ref. 1.)



COSMO BIO CO., LTD.  
Inspiration for Life Science

**Anti-Mrc1 (*S. pombe*) antibody**

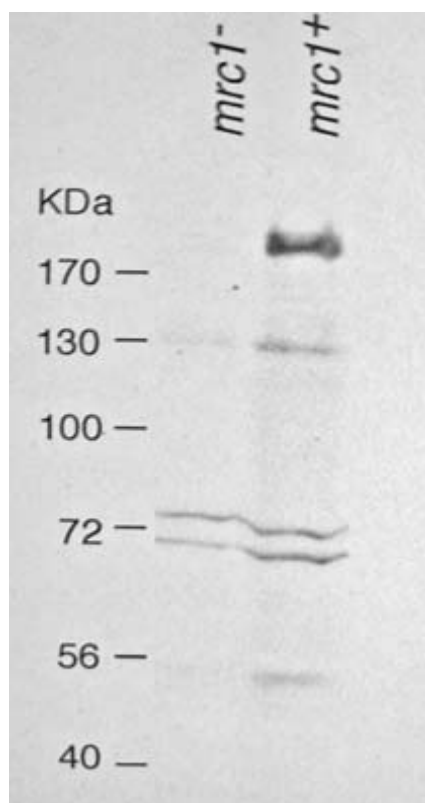


Fig.1 Western blot analysis of  
Mrc1 in the whole cell extracts.

Lane 1: mrc- strain

Lane 2: Wild type strain

*For research use only. Not for clinical diagnosis.*

Manufactured by BioAcademia, Inc.



COSMO BIO CO., LTD.  
Inspiration for Life Science

TOYO 2CHOME, KOTO-KU, TOKYO, 135-0016, JAPAN

[http://www.cosmobio.co.jp/index\\_e.asp](http://www.cosmobio.co.jp/index_e.asp)

Phone : +81-3-5632-9617

E-mail: [export@cosmobio.co.jp](mailto:export@cosmobio.co.jp)

FAX : +81-3-5632-9618