



POLYCLONAL ANTIBODY

For research use only. Not for clinical diagnosis.

Catalog No. 63-151EX

Anti-Mrc1 (*S. pombe*) antibody

BACKGROUND

Mrc1 (Mediator of replication checkpoint 1) is a S-phase checkpoint protein of *Schizosaccharomyces pombe* found at replication forks, required for phosphorylation and activation of Cds1 during DNA replication stress, where it forms a replication pausing complex, and is phosphorylated by Rad3 and Tel1 kinases. The phosphorylated form of **Mrc1** is detected by a change in the electrophoretic mobility.

Product type	Primary antibodies
Host	Rabbit
Source	Serum
Form	Undiluted rabbit antiserum added with 0.05 % sodium azide
Volume	50μL
Concentration	
Specificity	
Antigen	Purified recombinant protein containing amino acids 1~317 of Mrc1

Application notes	Western blotting (x 5,000 dilution) Other applications have not been tested. Optimal dilutions/concentrations should be determined by the end user.
--------------------------	---

Data Link	Swiss-Prot Q9P7T4
Cross reactivity	
Storage	Shipped at 4 °C and store at -20°C
References	1. Zhao H <i>et al</i> "Replication checkpoint protein Mrc1 is regulated by Rad3 and Tel1 in fission yeast." <i>Mol Cell Biol</i> 23 : 8395-8403 (2003) PMID: 14585996

(This product is described and used in Ref. 1.)



COSMO BIO CO., LTD.
Inspiration for Life Science

Anti-Mrc1 (*S. pombe*) antibody

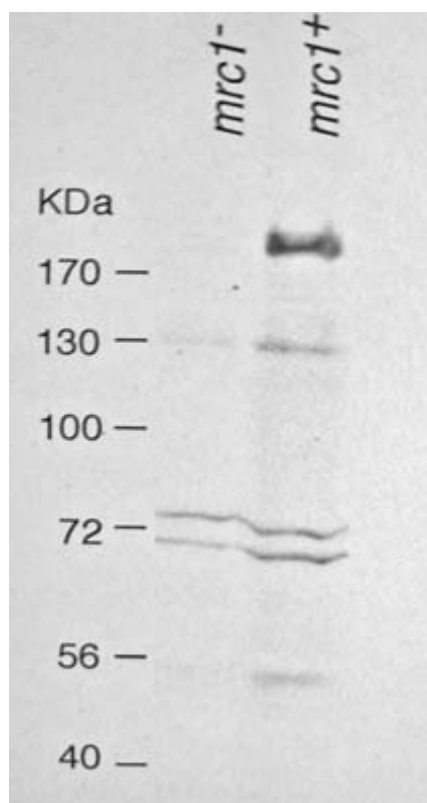


Fig.1 Western blot analysis of
Mrc1 in the whole cell extracts.

Lane 1: mrc- strain

Lane 2: Wild type strain

For research use only. Not for clinical diagnosis.

Manufactured by BioAcademia, Inc.



COSMO BIO CO., LTD.
Inspiration for Life Science

TOYO 2CHOME, KOTO-KU, TOKYO, 135-0016, JAPAN

http://www.cosmobio.co.jp/index_e.asp

Phone : +81-3-5632-9617

E-mail: export@cosmobio.co.jp

FAX : +81-3-5632-9618