



POLYCLONAL ANTIBODY

For research use only. Not for clinical diagnosis.

Catalog No. BAM-63-151-EX

Anti-Mrc1 (*S. pombe*)

BACKGROUND

Mrc1 (**M**ediator of replication checkpoint 1) is a S-phase checkpoint protein of *Schizosaccharomyces pombe* found at replication forks, required for phosphorylation and activation of Cds1 during DNA replication stress, where it forms a replication pausing complex, and is phosphorylated by Rad3 and Tel1 kinases. The phosphorylated form of Mrc1 is detected by a change in the electrophoretic mobility.

Product type	Primary antibodies
Host	Rabbit
Source	Serum
Form	Liquid
Volume	Undiluted rabbit antiserum added with 0.05 % sodium azide 50 µl
Concentration	
Specificity	
Antigen	Purified recombinant protein containing amino acids 1-317 of Mrc1
Isotype	

Application notes WB, IP
Recommended use

Recommended dilutions
Western blotting: x 5,000 dilution

Optimal dilutions/concentrations should be determined by the end user.
Data Link: UniProtKB/Swiss-Prot [Q9P7T4](#) (MRC1_SCHPO)

Staining Pattern

Cross reactivity

Storage 4°C (for long period; -70°C)

References 1) Zhao H *et al* "Replication checkpoint protein Mrc1 is regulated by Rad3 and Tel1 in fission yeast" *Mol Cell Biol* **23**: 8395- 8403 (2003) PMID: [14585996](#)
(This product is described and used in reference 1.)

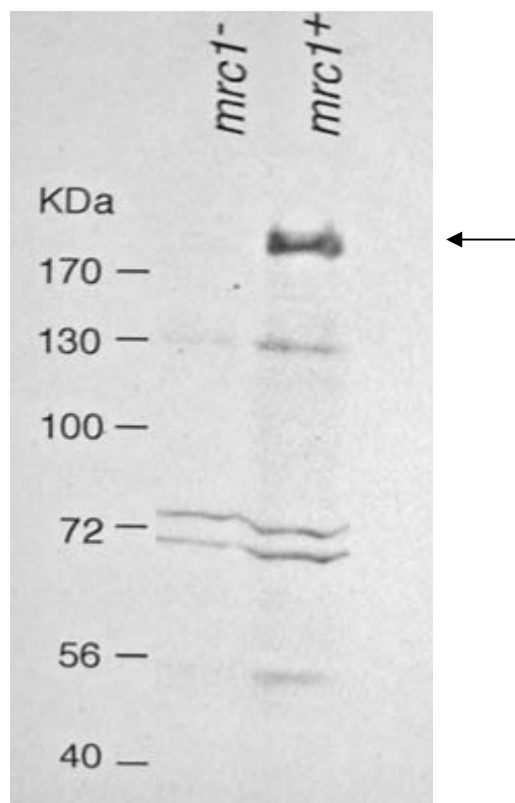


Fig.1 Western blot analysis of Mrc1 in the whole cell extracts.
Lane 1: mrc- strain
Lane 2: Wild type strain

For research use only. Not for clinical diagnosis.

Manufactured by BioAcademia, Inc.



COSMO BIO Co., LTD.
Inspiration for Life Science

TOYO 2CHOME, KOTO-KU, TOKYO, 135-0016, JAPAN
http://www.cosmobio.co.jp/index_e.asp E-mail: export@cosmobio.co.jp
Phone : +81-3-5632-9617 FAX : +81-3-5632-9618