



Anti-Psm1 (*S. pombe*) antibody, rabbit serum

BACKGROUND

Schizosaccharomyces pombe **Psm1** is a component of protein complex called cohesin which is required for sister chromatid cohesion during cell cycle and in DNA repair. The cohesion complex apparently forms a large proteinaceous ring within which sister chromatids can be trapped. At anaphase, the complex is cleaved and dissociates from chromatin, allowing sister chromatids to segregate. *S. pombe* cohesin complexes are composed of the **Psm1** and Psm3 heterodimer attached via their hinge domain, Rad21 which link them, and Psc3, which interacts with Rad21. Cohesin subunits are enriched in broad centromere region.

Product type	Primary antibodies
Host	Rabbit
Source	serum
Form	Liquid Rabbit antiserum added with 0.05 % sodium azide
Volume	100 µl
Concentration	
Specificity	Psm1
Antigen	Recombinant GST-Psm1 (N-terminal 1~631 region of <i>S. pombe</i> Psm1) fusion protein (1)
Isotype	

Application notes Immunoblotting, IP
Recommended use

Recommended dilutions
Immunoblotting (dilution: 1/300~1/1,000)

Optimal dilutions/concentrations should be determined by the end user.

Data Link: [Swiss-Prot Q94383](#)

Staining Pattern

Cross reactivity Specific to *S. pombe*

Storage -20°C

References

- 1) Tomonaga T *et al* "Characterization of fission yeast cohesin: essential anaphase proteolysis of Rad21 phosphorylated in the S phase." *Genes Dev* **14**: 2757-2770 (2000) PMID: [11069892](#)
- 2) Sakai A *et al* "Condensin but not cohesin SMC heterodimer induces DNA reannealing through protein-protein assembly." *EMBO J* **22**: 2764-2775 (2003) PMID: [12773391](#)

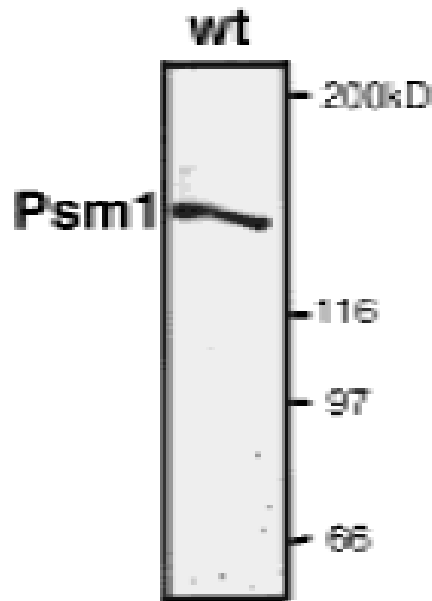


Fig.1 Detection of psm1 by immunoblot using this antibody (ref.1).
Psm1 showed the expected 140 kD band.

For research use only. Not for clinical diagnosis.

Manufactured by BioAcademia, Inc.



COSMO BIO Co., LTD.

Inspiration for Life Science

TOYO 2CHOME, KOTO-KU, TOKYO, 135-0016, JAPAN

URL: <http://www.cosmobio.co.jp>

e-mail: export@cosmobio.co.jp

[Outside Japan] Phone : +81-3-5632-9617

[国内連絡先] Phone : +81-3-5632-9610

FAX : +81-3-5632-9618

FAX : +81-3-5632-9619