



POLYCLONAL ANTIBODY

For research use only. Not for clinical diagnosis.

Catalog No. BAM-63-123-EX

Anti-Dis3 (*S. pombe*)

BACKGROUND

S. pombe **Dis3** protein is an essential component for mitotic segregation (ref.1). It is a component of the exosome 3'→5' exoribonuclease complex. It is required for the 3'-processing of the 7S pre-RNA to the mature nuclear complex. It is also associated with the GTPase Ran and has a 3'-5' exonuclease activity. It is composed of 970 amino acids with molecular mass of 110 kDa. It is highly conserved functionally and structurally from yeast to human.

Product type	Primary antibodies
Host	Rabbit
Source	Serum
Form	Liquid
Volume	Rabbit antiserum added with 0.05 % sodium azide, 50% glycerol
Concentration	200 µl
Specificity	Dis3
Antigen	Recombinant truncated Dis3 protein (70 kDa)
Isotype	

Application notes WB, IF
Recommended use

Recommended dilutions
Western blotting: 100~300 fold dilution

Optimal dilutions/concentrations should be determined by the end user.
Staining Pattern

Cross reactivity Reacts with *S. pombe* Dis3 protein. Not tested for other species.

Storage 4°C (long period, -20°C or -70°C)

References

- 1) Kinoshita N., Goebel M., Yanagida M. "The fission yeast *dis3+* gene encodes a 110-kDa essential protein implicated in mitotic control." *Mol. Cell. Biol.* **11**:5839-5847(1991) PubMed: [1944266](#)
- 2) Noguchi E. *et al.* "Dis3, implicated in mitotic control, binds directly to Ran and enhances the GEF activity of RCC1." *EMBO J.* **15**:5595-5605(1996) PubMed: [8896453](#)

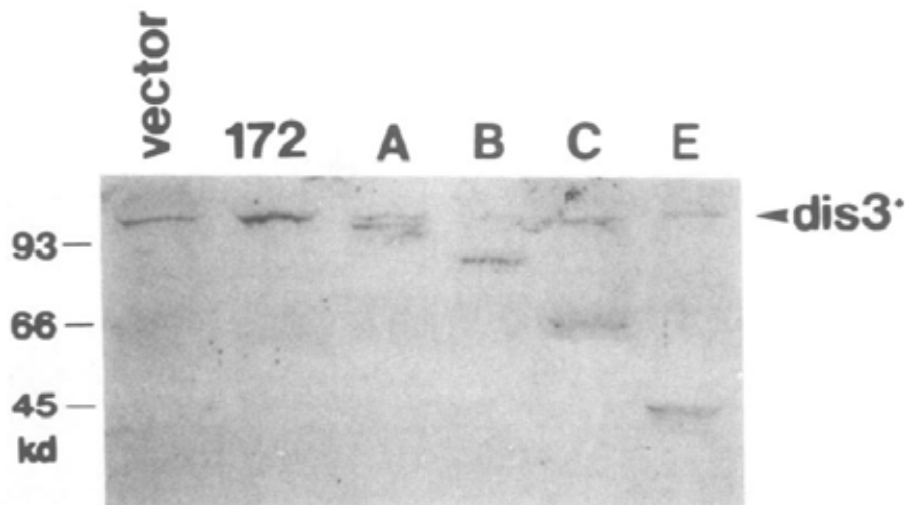


Fig.1 Immunoblotting of extracts of *S. pombe* cells transformed with the vector or plasmids carrying truncated genes (172, A, B, C, E) with anti-Dis3 antibodies. Polypeptides of expected molecular masses were detected (ref.1).

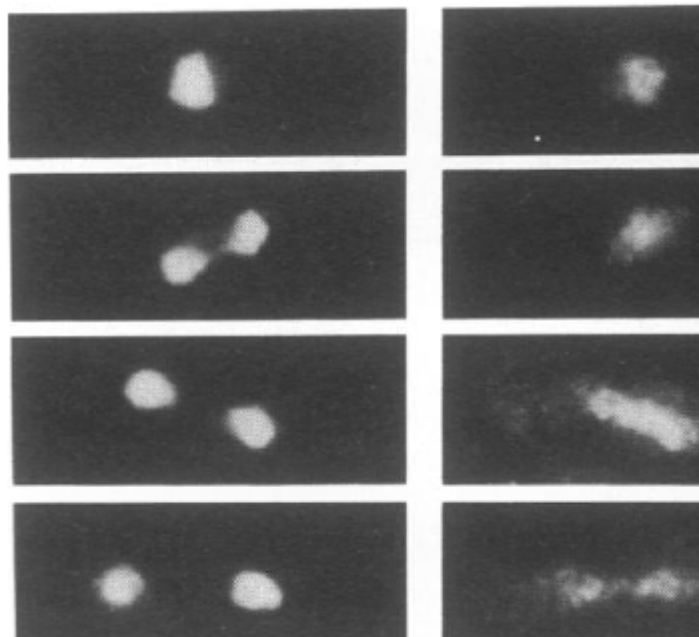


Fig.2 Localization of the *dis3*⁺ gene product by immunofluorescence microscopy. *S. pombe* cells were fixed and prepared for immunofluorescence microscopy with anti-*dis3* antibodies. Left, DAPI stain for chromosomal DNA. Right, anti-Dis3 antibody stain (ref.1).

For research use only. Not for clinical diagnosis.

Manufactured by BioAcademia, Inc.



COSMO BIO Co., LTD.
Inspiration for Life Science

TOYO 2CHOME, KOTO-KU, TOKYO, 135-0016, JAPAN

http://www.cosmobio.co.jp/index_e.asp

Phone : +81-3-5632-9617

E-mail: export@cosmobio.co.jp

FAX : +81-3-5632-9618