



POLYCLONAL ANTIBODY

For research use only. Not for clinical diagnosis.

Catalog No. BAM-63-105-EX

Anti- Cnd2 (*S. pombe*)

BACKGROUND

Cnd2 protein is a regulatory subunit of the condensin complex, which is required for conversion of interphase chromatin into mitotic condensed chromosomes in *S. pombe*. The condensin complex also plays a role during interphase in processes of DNA repair and recombination.

Although molecular mass of the Cnd2 protein of *S. pombe* from the DNA sequence is 83.2 kDa, it migrates on SDS-PAGE at a position equivalent to a 105 kDa protein (Ref. 2).

Product type	Primary antibodies
Antigen	Recombinant GST-Cnd2 fusion protein expressed in <i>E. coli</i>
Host	Rabbit
Clone	-
Isotype	-
Source	Serum
Form	Rabbit antiserum added with 0.05 % sodium azide
Concentration	-
Volume	100 ul
Label	-
Specificity	Reacts with <i>S. pombe</i> Cnd2 protein.
Cross reactivity	
Storage	Shipped at 4°C. Upon arrival aliquot and store at -20°C or below.
Other	Data Link : cnd2: pombe : GeneDB

Application notes	WB, IF Other applications have not been tested. Recommended dilutions Western blotting (500 fold dilution / Ref. 1, 2, 3) Immunofluorescent staining (Ref. 3) Optimal dilutions/concentrations should be determined by the end user.
--------------------------	---

References	<ol style="list-style-type: none">1) Chen ES, Sutani T, Yanagida M. Chen ES, Sutani T, Yanagida M. (2004) Cti1/C1D interacts with condensin SMC hinge and supports the DNA repair function of condensin. Proc Natl Acad Sci U S A. 101:8078-83. PNAS Content2) Aono N, Sutani T, Tomonaga T, Mochida S, Yanagida M. (2002) Cnd2 has dual roles in mitotic condensation and interphase. Nature. 417:197-202. pubmed/120009643) Morishita J.(2001) Bir1/Cut17 moving from chromosome to spindle upon the loss of cohesion is required for condensation, spindle elongation and repair. Genes Cells. 6:743-63. Genes to Cells - Wiley Online Library
-------------------	---

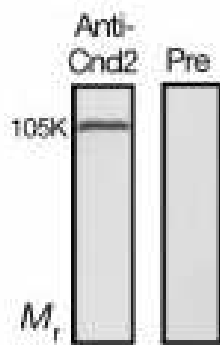


Fig.1 Identification of Cnd2 protein in the crude extract of *S. pombe* by western blotting with this antiserum.

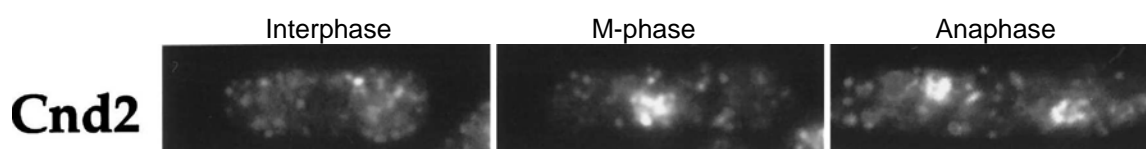


Fig.2 Detection of Cnd2 protein by immunofluorescent staining of *S. pombe* cell.

For research use only. Not for clinical diagnosis.

Manufactured by BioAcademia, Inc.



COSMO BIO CO., LTD.

Inspiration for Life Science

TOYO 2CHOME, KOTO-KU, TOKYO, 135-0016, JAPAN

URL: <http://www.cosmobio.co.jp>

e-mail: export@cosmobio.co.jp

[Outside Japan] Phone : +81-3-5632-9617

[国内連絡先] Phone : +81-3-5632-9610

FAX : +81-3-5632-9618

FAX : +81-3-5632-9619