



## **Anti-Swi6 (*S. pombe*) antibody, rabbit serum, Chlp grade**

Swi6 protein of fission yeast is a functional and structural homolog of HP1 (Heterochromatin Protein 1) of animals and is involved in the formation of heterochromatin structure by binding to centromere, telomere and silent mating-type locus. It is also involved in silencing the genes and sister chromatid cohesion by binding to histone H3 methylated at Lys9 and the cohesin subunit Psc3 (Ref. 1).

This antiserum was produced by immunizing full-size Swi6 recombinant protein from *E. coli*. Although genome data indicate the swi6 gene encodes a protein of 37 kD, Western blot analysis of crude extract of *S. pombe* detects a protein with an apparent molecular size of 53 kD (Figure and Ref. 2 & 3).

**Applications** For the studies of RNAi mechanism

1. Western blotting (x 2,000~10,000 dilution) (Figure) Background noise was reduced with diluted antibody
2. Immunoprecipitation
3. Chromatin Immuno-Precipitation

### **Specification**

**Form:** Undiluted antiserum added with 0.09% sodium azide

**Reactivity:** Swi6 protein of *S. pombe*

**Size:** 50µl

**Storage :** Shipped at 4°C or -20°C, and upon arrival, aliquot and store at -20°C.

**Data Link** UniProtKB/Swiss-Prot P40381 (SWI6\_SCHPO)

### **References**

1. Yao MC et al "Programmed DNA deletion as an RNA –guided system of genome defense"  
Science 300:1581-1854 (2003) PMID: [12791996](#)
2. Ekwall K et al "The chromodomain protein Swi6: a key component at fission yeast centromeres"  
Science 269:1429 -1431 (1995) PMID: [7660126](#)
3. Wang G et al "Conservation of heterochromatin protein 1 function" Mol Cell Biol 20:6970-6983 (2000)  
PMID: [10958692](#)



COSMO BIO Co., LTD.  
Inspiration for Life Science

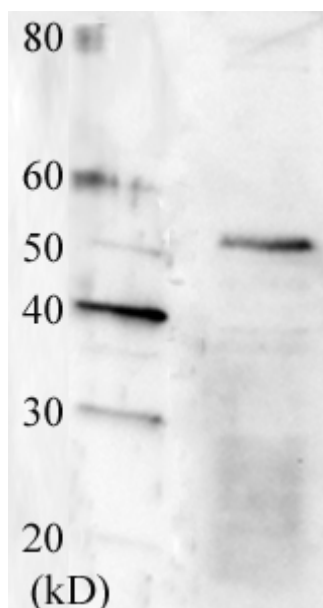


Fig.1 Detection of Swi6 protein by  
Western blotting using this antibody

*For research use only. Not for clinical diagnosis.*

Manufactured by BioAcademia Inc.



COSMO BIO Co., LTD.  
Inspiration for Life Science

TOYO 2CHOME, KOTO-KU, TOKYO, 135-0016, JAPAN

URL: <http://www.cosmobio.co.jp>

e-mail: [export@cosmobio.co.jp](mailto:export@cosmobio.co.jp)

[Outside Japan] Phone : +81-3-5632-9617

[国内連絡先] Phone : +81-3-5632-9610

FAX : +81-3-5632-9618

FAX : +81-3-5632-9619