



POLYCLONAL ANTIBODY

For research use only. Not for clinical diagnosis.

Catalog No. 63-011EX

Anti-Cdc22 / RMM1 (*S. pombe*) antibody, rabbit polyclonal

The *cdc22* gene of *S. pombe* encodes ribonucleoside-diphosphate reductase large chain (811 aa, 92 kDa) which forms heterodimer with the small chain. The heterodimer catalyzes the biosynthesis of deoxyribonucleotides from the corresponding ribonucleotides and provides the precursors necessary for DNA synthesis.

Applications: Western blotting (1/1,000 dilution.) Other applications have not been tested.

Reactivity: Reacts with *S. pombe* Cdc22 protein. (Not tested in other species)

Immunogen: Synthetic peptide, NVNPTDLWDWAE-C, corresponding to 571-582 residues of *S. pombe* Cdc22 protein.

Purity: Affinity purified with the immunogen peptide conjugated with agarose beads.

Form: 1 mg/ml in PBS with 50% glycerol. Filter-sterilized.

Size: 100 ug

Storage: Sent at 4°C or -20°C. Upon arrival, spin-down and store at -20°C.

Data links: Uniprot : [P36602](#)

PomBase: [cdc22 \(SPAC1F7.05\)](#)

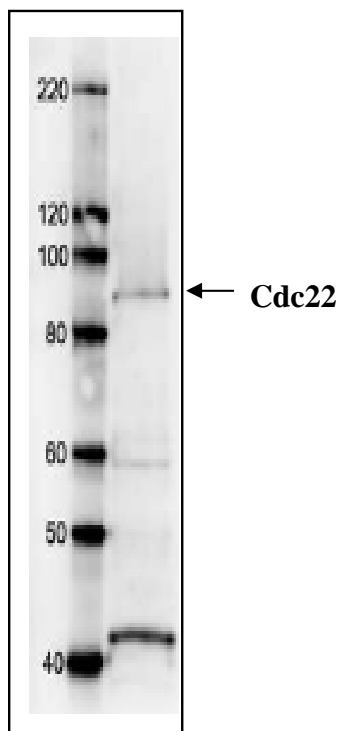


Fig. Western blot analysis with Cdc22 antibody.

Cdc22 protein (92 kDa) was detected by western blotting in *S. pombe* crude extract. 7.5 % SDS-PAGE was used. Anti-Cdc22 antibody was used at 1/1,000 dilution and secondary antibody, anti-rabbit IgG conjugated with HRP, was used at 1/10,000 dilution.