



## Anti-Rad22 (*S. pombe*) antibody (rabbit serum)

Immuned Animal: Rabbit  
Polyclonal antiserum

Product No.: BAM-63-003 50ul  
BAM-63-004 250ul

Rad22 protein of *Schizosaccharomyces pombe* (fission yeast) is a functional and structural homolog of *S. cerevisiae* and human Rad52 proteins, which play a major role in genetic recombination and recombination repair by mediating strand annealing reaction between homologous DNA strands (1).

The product was prepared by immunizing rabbit with recombinant Rhp22 protein expressed in *E. coli* and purified.

Using this anti-serum, Rad22 protein (52 kD) in the crude extract was detected by Western blotting at the position near the 60 kD marker (Fig 1)

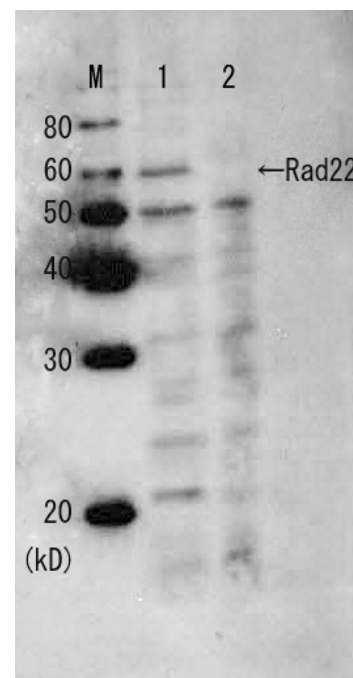
### Applications

- 1) Western blotting (x 2,000~5,000 dilution)
- 2) Immuno-precipitation
- 3) Detection of foci formation by indirect immunofluorescence

### Specifications

Package size: 50ul, 250ul  
Form: 0.09 % sodium azide added  
Storage: 4°C

Fig. 1 Western blot analysis of Rad22 in whole cell extracts.  
M: Molecular weight markers (kD)  
Lane 1, Wild-type strain.  
Lane 2, rad22 deletion strain.



### Reference

1. Lehmann AR, Mutation Res. 363, 147 (1996) Review

*For research use only; not for use as a diagnostic.*

