



POLYCLONAL ANTIBODY

For research use only. Not for clinical diagnosis.

Catalog No. 62-302

Anti-Cdc37 (*S. cerevisiae*)

BACKGROUND

Cdc37 was initially identified as a cell division cycle control protein of *Saccharomyces cerevisiae* (1) and was later found to have a much broader role as a molecular chaperone required for folding of protein kinases (2). It forms complex with Hsp90 and a variety of protein kinases and is thought to play a critical role in directing Hsp90 to its target kinases (3). **Cdc37** has a molecular weight of 58.4 kD.

Product type	Primary antibodies
Host	Rabbit
Source	Serum
Form	Liquid
Volume	Rabbit antiserum added with 1 X PBS, 50% glycerol, 0.09 % sodium azide
Concentration	100 µl
Specificity	<i>S. cerevisiae</i> Cdc37
Antigen	Recombinant yeast Cdc37 expressed in <i>E. coli</i>
Isotype	

Application notes WB, IP, Indirect immuno-staining Not tested for other applications.

Recommended use

Recommended dilutions

WB: 2,000 fold dilution

Immunoprecipitation

Optimal dilutions/concentrations should be determined by the end user.

Staining Pattern

Cross reactivity *S. cerevisiae* Cdc37, not tested with other species

Storage -20°C (For prolonged -70°C)

- References**
- 1) Reed, S.I. "The selection of *S. cerevisiae* mutants defective in the start event of cell division." *Genetics* **95**, 561-577 (1980) PMID: 7002718
 - 2) Kimura, Y. *et al.* "Cdc37 is a molecular chaperone with specific functions in signal transduction." *Genes Dev.* **11**, 1775-1785 (1997) PMID: 9242486
 - 3) Stepanova, L. *et al.* "Mammalian p50Cdc37 is a protein kinase targeting subunit of Hsp90 that binds and stabilizes Cdk4." *Genes Dev.* **10**, 1491-1502 (1996) PMID: 8666233

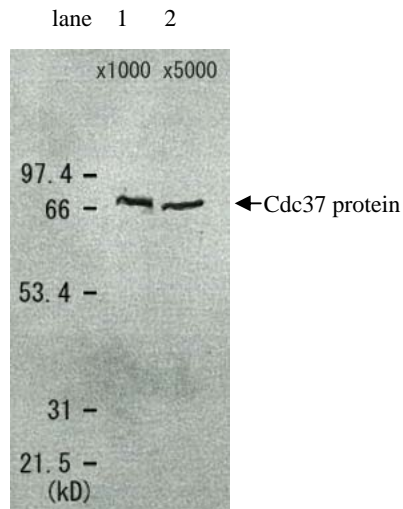


Fig.1 Detection of Cdc37 protein in the crude extract of *S. cerevisiae* by Western blotting using this antibody.

lane 1: x 1000 dilution

lane 2: x 5000 dilution

Cdc37 protein has a molecular weight of 58.4 kD, but appeared as a 68 kD band in SDS-PAGE.

For research use only. Not for clinical diagnosis.

Manufactured by BioAcademia, Inc.



COSMO BIO Co., LTD.

Inspiration for Life Science

TOYO 2CHOME, KOTO-KU, TOKYO, 135-0016, JAPAN

URL: <http://www.cosmobio.co.jp>

e-mail: export@cosmobio.co.jp

[Outside Japan] Phone : +81-3-5632-9617

[国内連絡先] Phone : +81-3-5632-9610

FAX : +81-3-5632-9618

FAX : +81-3-5632-9619