



Anti-Tem1 (*S. cerevisiae*) antibody, affinity purified

BACKGROUND

Tem1 is a low-molecular-weight GTP-binding protein (GTPase) which is required for the termination of M phase in cell division. The defect of **Tem1** was lethal, and the **Tem1**-defective cells were arrested at telophase with high H1-kinase activity, indicating that **Tem1** is required to exit from M phase. The defect of **Tem1** was suppressed by a high dose of *cdc15*, which encodes a protein kinase. **Tem1** functions upstream of *cdc15* kinase and may be required to activate the *cdc15* protein kinase pathway. A cascade consisting of **Tem1** and kinases act to terminate mitosis.

Product type	Primary antibodies
Host	Rabbit
Source	Rabbit polyclonal antibody affinity purified with the immunogen after adsorption of anti-GST antibody with GST—affinity column.
Form	Liquid Affinity purified IgG in PBS, 1 mg/ml BSA, 0.09 % sodium azide, 50% glycerol
Volume	100 µl
Concentration	
Specificity	Tem1
Antigen	GST-full length Tem1 fusion protein expressed in <i>E. coli</i>
Isotype	

Application notes	WB, IP
Recommended use	

Recommended dilutions

Western blotting: 1/250~1/500

Optimal dilutions/concentrations should be determined by the end user.

Data Link: SGD [TEM1/YML064C](#)

Staining Pattern

Cross reactivity	<i>S. cerevisiae</i> Tem1, not tested with other species
------------------	--

Storage	-20°C
---------	-------

References	1) Shirayama M <i>et al</i> "The yeast TEM1 gene, which encodes a GTP-binding protein, is involved in termination of M phase." <i>Mol Cell Biol</i> 14 , 7476-7482 (1994) PMID: 7935462 2) Shou W <i>et al</i> "Exit from mitosis is triggered by Tem1- dependent release of protein phosphatase Cdc14 from nucleolar RENT complex." <i>Cell</i> 97 :233-244 (1999) PMID: 10219244 3) Lippincott J <i>et al</i> "The Tem1 small GTPase controls actomyosin and septin dynamics during cytokinesis." <i>J Cell Sci</i> 114 :1379-1386 (2001) PMID: 11257003
------------	---

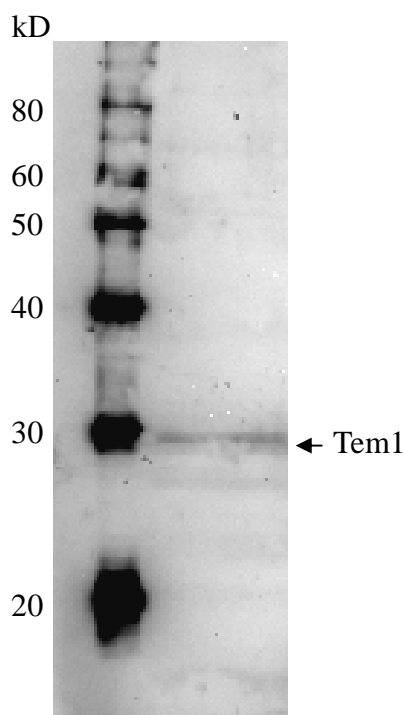


Fig.1 Detection of Tem1 (28kD) in the crude extract of *S. cerevisiae* by Western blotting using this antibody.

Related Products

BAM-62-201-EX	Anti Rpn3
BAM-62-203-EX	Anti Rpn5
BAM-62-205-EX	Anti Rpn7
BAM-62-207-EX	Anti Rpn9
BAM-62-209-EX	Anti Rpn12
BAM-62-211-EX	Anti Nob1
BAM-62-213-EX	Anti Nas6

For research use only. Not for clinical diagnosis.

Manufactured by BioAcademia, Inc.



COSMO BIO CO., LTD.

Inspiration for Life Science

TOYO 2CHOME, KOTO-KU, TOKYO, 135-0016, JAPAN

URL: <http://www.cosmobio.co.jp>

e-mail: export@cosmobio.co.jp

[Outside Japan] Phone : +81-3-5632-9617

[国内連絡先] Phone : +81-3-5632-9610

FAX : +81-3-5632-9618

FAX : +81-3-5632-9619