



Anti-Nob1 (*S. cerevisiae*) antibody, affinity purified

BACKGROUND

The 26 S proteasome is a protein complex with a molecular mass of ~2,000 kDa. It is essential not only for eliminating damaged or misfolded proteins but also for degrading short lived regulatory proteins involved in cell cycle regulation, DNA repair, signal transduction, apoptosis, and metabolic regulation (1). **Nob1p** is essential nuclear protein required for biogenesis of the 26S proteasome (2). **Nob1p** is speculated to serve as a chaperone to join the 20S proteasome with the 19S regulatory particle in the nucleus and to be degraded upon the maturation of the 26S proteasome (3). **Nob1p** is composed of 459 amino acid residues with molecular mass of 51.7 kDa..

Product type	Primary antibodies
Host	Rabbit
Source	
Form	Liquid
	Purified IgG in PBS, 1 mg/ml BSA, 0.09 % sodium azide, 50% glycerol
Volume	100 µl
Concentration	
Specificity	Nob1p
Antigen	Recombinant yeast Nob1p expressed in <i>E. coli</i>
Isotype	

Application notes WB, IP Not tested for other applications

Recommended use

Recommended dilutions

Western blotting: ~400 fold dilution

Optimal dilutions/concentrations should be determined by the end user.

Data Link: SGD [NOB1/YOR056C](#)

Staining Pattern

Cross reactivity *S. cerevisiae* Nob1p. Not tested with other species

Storage -20°C

References 1) Herskho, A., and Ciechanover, A. THE UBIQUITIN SYSTEM *Annu. Rev. Biochem.* **67**: 425-479 (1998) PMID: [9759494](#)

2) Tone,Y. et al. Nob1p, a new essential protein, associates with the 26S proteasome of growing *Saccharomyces cerevisiae* cells. *Gene* **243**: 37-45 (2000) PMID: [10675611](#)

3) Tone,Y., and Toh-e,A. Nob1p is required for biogenesis of the 26S proteasome and degraded upon its maturation in *Saccharomyces cerevisiae*. *Genes & Dev.* **16**: 3142-3157 (2002) PMID: [12502737](#)

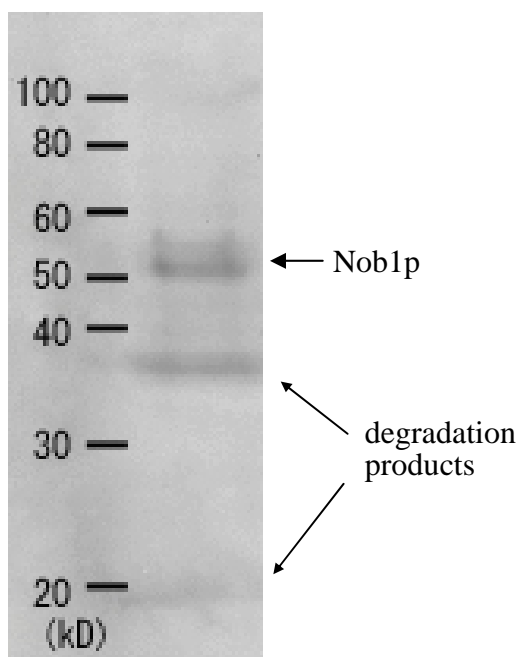


Fig 1. Detection of Nob1p (51.7 kD) in the crude extract of *S. cerevisiae* by Western blotting using this antibody. Nob1 protein has tendency to degrade in vivo (Ref. 3).

Related Products

BAM-62-201-EX	Anti Rpn3
BAM-62-203-EX	Anti Rpn5
BAM-62-205-EX	Anti Rpn7
BAM-62-207-EX	Anti Rpn9
BAM-62-209-EX	Anti Rpn12
BAM-62-213-EX	Anti Nas6
BAM-62-215-EX	Anti Tem1

For research use only. Not for clinical diagnosis.

Manufactured by BioAcademia, Inc.



COSMO BIO CO., LTD.

Inspiration for Life Science

TOYO 2CHOME, KOTO-KU, TOKYO, 135-0016, JAPAN

URL: <http://www.cosmobio.co.jp>

e-mail: export@cosmobio.co.jp

[Outside Japan] Phone : +81-3-5632-9617

[国内連絡先] Phone : +81-3-5632-9610

FAX : +81-3-5632-9618

FAX : +81-3-5632-9619