



anti-Nob1

BACKGROUND

The 26 S proteasome is a protein complex with a molecular mass of 2,000 kDa. It is essential not only for eliminating damaged or misfolded proteins but also for degrading short lived regulatory proteins involved in cell cycle regulation, DNA repair, signal transduction, apoptosis, and metabolic regulation (1). Nob1p is essential nuclear protein required for biogenesis of the 26S proteasome (2). Nob1p is speculated to serve as a chaperone to join the 20S proteasome with the 19S regulatory particle in the nucleus and to be degraded upon the maturation of the 26S proteasome (3). Nob1p is composed of 459 amino acid residues.

Product type	Primary antibodies
Host	Rabbit
Source	Ascites
Form	Liquid
Volume	Purified IgG in PBS, 1 mg/ml BSA, 0.09 % sodium azide, 50% glycerol
Concentration	100ul
Specificity	<i>S. cerevisiae</i> Nob1p. Not tested with other species
Antigen	Recombinant yeast Nob1p expressed in <i>E. coli</i>
Clone	
Isotype	

Application notes WB, IP Other applications were not tested

Recommended use

Western Blotting: ~400 fold dilution

Recommended dilutions

Optimal dilutions/concentrations should be determined by the end user.

Staining Pattern

Cross reactivity Human Lamin B Receptor

Storage -20 °C

References Data Link SGD NOB1/YOR056C

This product was used in ref. 2 and 3

1) Herskho, A., and Ciechanover, A. THE UBIQUITIN SYSTEM Annu. Rev. Biochem. 67, 425-479 (1998) PMID: 9759494

2) Tone, Y. et al. Nob1p, a new essential protein, associates with the 26S proteasome of growing *Saccharomyces cerevisiae* cells. Gene 243:37-45 (2000) PMID:10675611

3) Tone, Y., and Toh-e, A. Nob1p is required for biogenesis of the 26S proteasome and degraded upon its maturation in *Saccharomyces cerevisiae*. Genes & Dev. 16 :3142-3157 (2002) PMID: 12502737

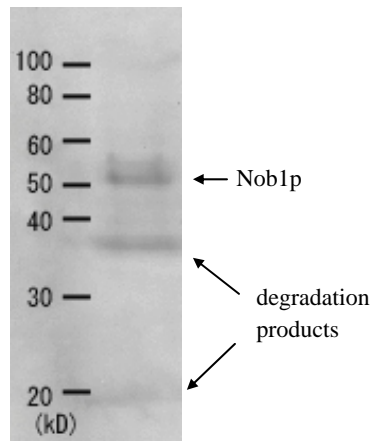


Figure1. Detection of Nob1p (51.7 kD) in the crude extract of *S. cerevisiae* by Western blotting using this antibody.

RELATED PRODUCT

62-201 anti-Rpn3, #62-203 anti-Rpn5, # 62-205 anti-Rpn7, #62-207 anti-Rpn9, #62-209 anti-Rpn12, # 62-213 anti-Nas6, #62-215 anti-Tem1

For research use only. Not for clinical diagnosis.

Manufactured by BioAcademia Inc.



COSMO BIO Co., LTD.

Inspiration for Life Science

TOYO 2CHOME, KOTO-KU, TOKYO, 135-0016, JAPAN

URL: <http://www.cosmobio.co.jp>

e-mail: export@cosmobio.co.jp

[Outside Japan] Phone : +81-3-5632-9617

[国内連絡先] Phone : +81-3-5632-9610

FAX : +81-3-5632-9618

FAX : +81-3-5632-9619