



Anti-Rpn9 (*S. cerevisiae*) antibody, purified

BACKGROUND

The 26 S proteasome is a protein complex with a molecular mass of ~2,000 kDa. It is essential not only for eliminating damaged or misfolded proteins but also for degrading short lived regulatory proteins involved in cell cycle regulation, DNA repair, signal transduction, apoptosis, and metabolic regulation (ref.1). The 26S proteasome is composed of the 20S core particle (CP) and the 19S regulatory particle (RP). The RP is further subdivided into lid and base sub-complexes. **Rpn9** is one of the non-ATPase subunits of lid. **Rpn9** plays a key role in facilitating the assembly of the 26S proteasome or in stabilizing the structure of the 26S proteasome. **Rpn9** null mutant is temperature sensitive and exhibits cell cycle and proteasome assembly defects.

Product type	Primary antibodies
Host	Rabbit
Source	
Form	Liquid Purified IgG in PBS, 1 mg/ml BSA, 0.09% sodium azide, 50% glycerol Antiserum containing anti-Rpn9 antibody was passed through a GST-Sepharose column to remove anti-GST antibody. Anti-Rpn9 antibody in the pass-through fraction was further purified on a protein A column (ref.2).
Volume	100 µl
Concentration	
Specificity	Rpn9
Antigen	GST-full length Rpn9 fusion protein expressed in <i>E. coli</i> (ref.2)
Isotype	

Application notes	WB, IP Recommended use
--------------------------	----------------------------------

Recommended dilutions

Western blotting: 1/1,000~1/2,000

Optimal dilutions/concentrations should be determined by the end user.

Data Link: SGD [RPN9/YDR427W](#)

Staining Pattern

Cross reactivity	<i>S. cerevisiae</i> Rpn9, not tested with other species
-------------------------	--

Storage	-20°C
----------------	-------

References	1) Herskho A and Ciechanover A "THE UBIQUITIN SYSTEM." <i>Annu. Rev. Biochem.</i> 67 , 425-479 (1998) PMID: 9759494 2) Takeuchi J et al "Rpn9 is required for efficient assembly of the yeast 26S proteasome." <i>Mol Cell Biol</i> 19 :6575-6584 (1999) PMID: 10490597
-------------------	--

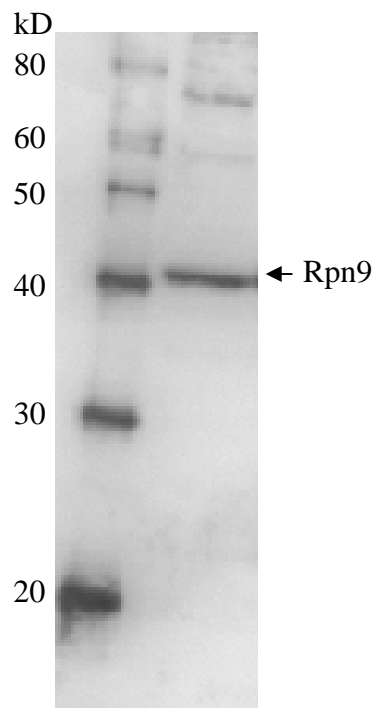


Fig.1 Detection of Rpn9 (46kD) in the crude extract of *S. cerevisiae* by Western blotting using this antibody.

Related Products

BAM-62-201-EX	Anti Rpn3
BAM-62-203-EX	Anti Rpn5
BAM-62-205-EX	Anti Rpn7
BAM-62-209-EX	Anti Rpn12
BAM-62-211-EX	Anti Nob1
BAM-62-213-EX	Anti Nas6
BAM-62-215-EX	Anti Tem1

For research use only. Not for clinical diagnosis.

Manufactured by BioAcademia, Inc.



COSMO BIO CO., LTD.

Inspiration for Life Science

TOYO 2CHOME, KOTO-KU, TOKYO, 135-0016, JAPAN

URL: <http://www.cosmobio.co.jp>

e-mail: export@cosmobio.co.jp

[Outside Japan] Phone : +81-3-5632-9617

[国内連絡先] Phone : +81-3-5632-9610

FAX : +81-3-5632-9618

FAX : +81-3-5632-9619