

**POLYCLONAL ANTIBODY**

*For research use only. Not for clinical diagnosis.*

**Catalog No. BAM-62-203-EX**

# Anti-Rpn5 (*S. cerevisiae*), affinity purified

## BACKGROUND

The 26 S proteasome is a protein complex with a molecular mass of ~2000 kDa. It is essential not only for eliminating damaged or misfolded proteins but also for degrading short lived regulatory proteins involved in cell cycle regulation, DNA repair, signal transduction, apoptosis, and metabolic regulation (1). Rpn5p is essential, non-ATPase regulatory subunit of the 26S proteasome lid, similar to mammalian p55 subunit and to another *S. cerevisiae* regulatory subunit, Rpn7 (2, 3.). It consists of 445 amino acids with molecular weight of 51,768.

<b>Product type</b>	Primary antibodies
<b>Host</b>	Rabbit
<b>Source</b>	
<b>Form</b>	Liquid
	Purified IgG in 100 mM NaCl, 10 mM Tris-HCl pH 7.4, 0.05 % sodium azide
<b>Volume</b>	100 µl
<b>Concentration</b>	
<b>Specificity</b>	
<b>Antigen</b>	Recombinant yeast Rpn5p expressed in <i>E. coli</i>
<b>Isotype</b>	

**Application notes** WB, IP Not tested for other applications

## Recommended use

## Recommended dilutions

Western blotting: ~1000 fold dilution

Optimal dilutions/concentrations should be determined by the end user.

Data Link: SGD [RPN5/YDL147W](#)

## Staining Pattern

**Cross reactivity** *S. cerevisiae* Rpn5p. Not tested with other species

**Storage** -20°C To avoid repeated freezing and thawing, store the antibody in aliquots.

## References

(This product was used in ref. 3)

- 1) Hershko A and Ciechanover A "THE UBIQUITIN SYSTEM" *Annu Rev Biochem* **67**: 425-479 (1998) PMID: [9759494](#)
- 2) Finley D *et al* "Unified nomenclature for subunits of the *Saccharomyces cerevisiae* proteasome regulatory particle" *Trends Biochem Sci* **23**: 244-245 (1998) PMID [9697412](#)
- 3) Isono E *et al* "The assembly pathway of the 19S regulatory particle of the yeast 26S proteasome" *Mol Biol Cell* **18**: 569-576 (2007) PMID: [17135287](#)

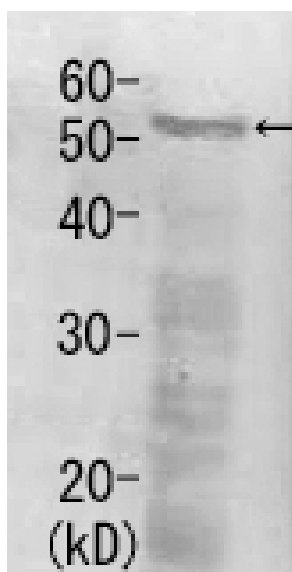


Fig.1 Detection of Rpn5 (52kDa) in the crude extract of *S. cerevisiae* by Western blotting using this antibody.

**Related Products**

BAM-62-201-EX	Anti-Rpn3
BAM-62-205-EX	Anti-Rpn7
BAM-62-207-EX	Anti-Rpn9
BAM-62-209-EX	Anti-Rpn12
BAM-62-211-EX	Anti-Nob1
BAM-62-213-EX	Anti-Nas6
BAM-62-215-EX	Anti-Tem1

*For research use only. Not for clinical diagnosis.*

Manufactured by BioAcademia, Inc.



COSMO BIO Co., LTD.

Inspiration for Life Science

TOYO 2CHOME, KOTO-KU, TOKYO, 135-0016, JAPAN

[http://www.cosmobio.co.jp/index\\_e.asp](http://www.cosmobio.co.jp/index_e.asp)

Phone : +81-3-5632-9617

E-mail: [export@cosmobio.co.jp](mailto:export@cosmobio.co.jp)

FAX : +81-3-5632-9618