

POLYCLONAL ANTIBODY

For research use only. Not for clinical diagnosis.

Catalog No. BAM-62-201-EX

Anti-Rpn3 (*S.cerevisiae*)

BACKGROUND

The 26 S proteasome is a protein complex with a molecular mass of ~2000 kDa. It is essential not only for eliminating damaged or misfolded proteins but also for degrading short lived regulatory proteins involved in cell cycle regulation, DNA repair, signal transduction, apoptosis, and metabolic regulation(1). Rpn3p is essential, non-ATPase regulatory subunit of the 26S proteasome lid, similar to the p58 subunit of the human 26S proteasome (2, 3, 4).

Product type	Primary antibodies
Host	Rabbit
Source	Serum
Form	Liquid
	Rabbit serum added with 0.05 % sodium azide
Volume	100 µl
Concentration	
Specificity	
Antigen	Recombinant yeast Rpn3p expressed in <i>E. coli</i>
Isotype	

Application notes WB, IP Not tested for other applications

Recommended use

Recommended dilutions

Western blotting: ~1000 fold dilution

Optimal dilutions/concentrations should be determined by the end user.

Data Link: SGD [RPN3/YER021W](#)

Staining Pattern

Cross reactivity *S. cerevisiae* Rpn3p. Not tested with other species.

Storage 4°C To avoid repeated freezing and thawing, store the antibody in aliquots.

- References**
- (This product was used in ref. 3 and 4)
- 1) Herskho A and Ciechanover A "THE UBIQUITIN SYSTEM" *Annu. Rev. Biochem.* **67**: 425-479 (1998) PMID: [9759494](#)
 - 2) Finley D *et al* "Unified nomenclature for subunits of the *Saccharomyces cerevisiae* proteasome regulatory particle" *Trends Biochem Sci* **23**: 244-245 (1988) PMID [9697412](#)
 - 3) Glickman MH *et al* "A subcomplex of the proteasome regulatory particle required for ubiquitin-conjugate degradation and related to the COP9-signalosome and eIF3" *Cell* **94**: 615-623 (1998) PMID: [9741626](#)
 - 4) Isono E *et al* "Rpn7 is required for the structural integrity of the 26S proteasome of *Saccharomyces cerevisiae*" *J Biol Chem* **279**: 27168-27176 (2004) PMID: [15102831](#)

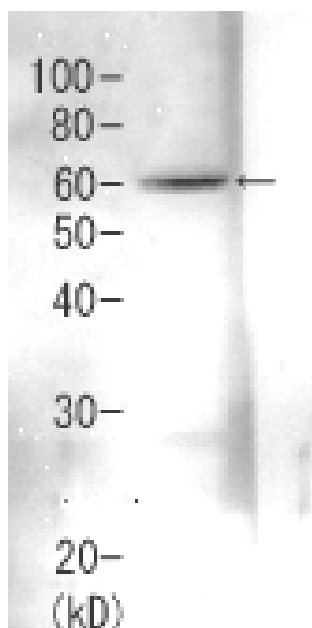


Fig.1 Detection of Rpn3 (60kDa) in the crude extract of *S. cerevisiae* by Western blotting using this antibody.

Related Products

BAM-62-203-EX	Anti-Rpn5
BAM-62-205-EX	Anti-Rpn7
BAM-62-207-EX	Anti-Rpn9
BAM-62-209-EX	Anti-Rpn12
BAM-62-211-EX	Anti-Nob1
BAM-62-213-EX	Anti-Nas6
BAM-62-215-EX	Anti-Tem1

For research use only. Not for clinical diagnosis.

Manufactured by BioAcademia, Inc.



COSMO BIO Co., LTD.
Inspiration for Life Science

TOYO 2CHOME, KOTO-KU, TOKYO, 135-0016, JAPAN
http://www.cosmobio.co.jp/index_e.asp E-mail: export@cosmobio.co.jp
Phone : +81-3-5632-9617 FAX : +81-3-5632-9618