



Anti-Rpn3

BACKGROUND

The 26 S proteasome is a protein complex with a molecular mass of 2000 kDa. It is essential not only for eliminating damaged or misfolded proteins but also for degrading short lived regulatory proteins involved in cell cycle regulation, DNA repair, signal transduction, apoptosis, and metabolic regulation (1). Rpn3p is essential, non-ATPase regulatory subunit of the 26S proteasome lid, similar to the p58 subunit of the human 26S proteasome (2, 3, 4).

Product type	Primary antibodies
Host	Rabbit
Source	Serum
Form	Liquid
	Rabbit serum added with 0.05 % sodium azide
Volume	100ul
Concentration	
Specificity	<i>S. cerevisiae</i> Rpn3p.
Antigen	Recombinant yeast Rpn3p expressed in <i>E. coli</i>
Clone	
Isotype	

Application notes WB, IP, Not tested for other application

Recommended use

Recommended dilutions

Western Blotting: ~1/ 1000

Optimal dilutions/concentrations should be determined by the end user.

Staining Pattern

Cross reactivity Not tested with other species

Storage 4°C. To avoid repeated freezing and thawing, store the antibody in aliquots.

References

This product was used in ref. 3 and 4

- 1) Hershko, A., and Ciechanover, A. THE UBIQUITIN SYSTEM Annu. Rev. Biochem. 67, 425-479 (1998)
- 2) Finley D, et al. Unified nomenclature for subunits of the *Saccharomyces cerevisiae* proteasome regulatory particle. Trends Biochem Sci 23:244 (1998)
- 3) Glickman MH, et al. A subcomplex of the proteasome regulatory particle required for ubiquitin-conjugate degradation and related to the COP9-signalosome and eIF3. *Cell* 94 :615-23((1998)
- 4) Isono E et al. Rpn7 Is required for the structural integrity of the 26 S proteasome of *Saccharomyces cerevisiae*. *J Biol Chem.* 279:27168-76 (2004)

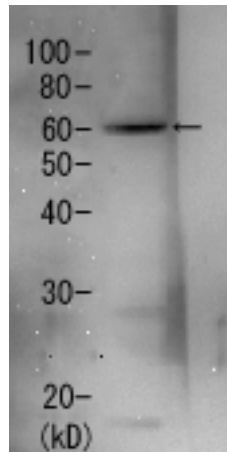


Figure. Detection of Rpn3 (60 kDa) in the crude extract of *S. cerevisiae* by Western blotting using this antibody.

Related products:

#62-203 anti-Rpn5, #62-205 anti-Rpn7, #62-207 anti-Rpn9,
62-209 anti-Rpn12, #62-211 anti-Nob1, #62-213 anti-Nas6, #62-215 anti-Tem1

For research use only. Not for clinical diagnosis.

Manufactured by BioAcademia Inc.



COSMO BIO Co., LTD.
Inspiration for Life Science

TOYO 2CHOME, KOTO-KU, TOKYO, 135-0016, JAPAN

URL: <http://www.cosmobio.co.jp>

e-mail: export@cosmobio.co.jp

[Outside Japan] Phone : +81-3-5632-9617

[国内連絡先] Phone : +81-3-5632-9610

FAX : +81-3-5632-9618

FAX : +81-3-5632-9619