



POLYCLONAL ANTIBODY

For research use only. Not for clinical diagnosis.

Catalog No. BAM-62-022

Anti-Toa1p

BACKGROUND

The fundamental transcription factor TFIIA stabilizes the DNA binding of TATA box-binding protein (TBP). It also plays a very important role in the activation of fundamental transcription factor TFIID by the function of the transcription regulator factor. The budding yeast TFIIA is composed of two subunits, Toa1p (286aa) and Toa2p (122aa). The product is prepared by immunizing rabbit with recombinant protein which was over-expressed in *E. coli* with a plasmid carrying the entire Toa1p protein (1-286aa) of budding yeast, and purified by chromatography. Using the product as antiserum in Western blotting, the band of 48 kD pertaining to Toa1p was obtained from the extract of yeast cells (Fig. 1).

| | |
|----------------------|---|
| Product type | Primary antibodies |
| Host | Rabbit |
| Source | Serum |
| Form | Liquid |
| | 0.1% sodium azide added to the antiserum. |
| Volume | 250 µl |
| Concentration | |
| Specificity | Toa1p protein |
| Antigen | Recombinant entire Toa1p protein (1-286aa), Yeast |
| Isotype | |

Application notes WB, ELISA

Recommended use

It can be used in Western blotting or ELISA for the detection and titration of budding yeast Toa1p.

Recommended dilutions

Optimal dilutions/concentrations should be determined by the end user.

Staining Pattern

Cross reactivity Yeast

Storage 4°C

References



Fig. 1 Detection of Toa1p by Western blotting using the Toa1p antibody.
Lane 1, Extract of budding yeast.
The antiserum was diluted 5000 fold before use.

For research use only. Not for clinical diagnosis.

Manufactured by BioAcademia Inc.



COSMO BIO CO., LTD.
Inspiration for Life Science

TOYO 2CHOME, KOTO-KU, TOKYO, 135-0016, JAPAN

URL: <http://www.cosmobio.co.jp>

e-mail: export@cosmobio.co.jp

[Outside Japan] Phone : +81-3-5632-9617

[国内連絡先] Phone : +81-3-5632-9610

FAX : +81-3-5632-9618

FAX : +81-3-5632-9619



COSMO BIO Co., LTD.

Inspiration for Life Science

ポリクローナル抗体

For research use only. Not for clinical diagnosis.

Catalog No. BAM-62-022

抗 Toa1p

BACKGROUND

基本転写因子 TFIIA は、TATA ボックス結合タンパク質 (TBP) の DNA 結合を安定化するとともに、転写調節因子の働きによって基本転写因子 TFIID が活性化される際に重要な役割を果たす。また出芽酵母の TFIIA は、Toa1p (286aa)、Toa2p (122aa) という 2 個のサブユニットから構成される。

本品は、出芽酵母 TOA1 遺伝子にコードされる Toa1p タンパク質の全長 (1-286aa) をプラスミドにクローニングし、大腸菌で多量に発現させ、クロマトグラフ法により精製したリコンビナントタンパク質をウサギに免疫して作製した。本品を抗血清として用いたウエスタンブロットにおいて、出芽細胞抽出液中に Toa1p の約 48 kD のバンドが検出された (図 1)。

| | |
|---------------|---|
| Product type | 一次抗体 |
| Host | ウサギ |
| Source | 血清 |
| Form | 液状 |
| | 0.1% アジ化ナトリウム添加抗血清 |
| Volume | 250 µl |
| Concentration | |
| Specificity | Toa1p |
| Antigen | リコンビナント Toa1p タンパク質の全長 (1-286aa) , 出芽酵母 |
| Isotype | |

Application notes WB, ELISA

Recommended use

出芽酵母 Toa1p の検出や定量を目的としたウエスタンブロット法や ELISA 法に使用できる。

Recommended dilutions

Optimal dilutions/concentrations should be determined by the end user.

Staining Pattern

Cross reactivity 出芽酵母

Storage 4°C

References

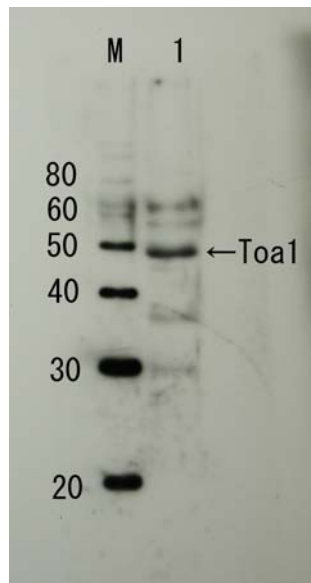


図1 抗 Toa1p 抗体を用いたウエスタンブロット法による Toa1p 抗原の検出
レーン1、出芽酵母細胞抽出液
抗血清は、5,000 倍希釈して使用

For research use only. Not for clinical diagnosis.

Manufactured by BioAcademia Inc.



COSMO BIO Co., LTD.
Inspiration for Life Science

TOYO 2CHOME, KOTO-KU, TOKYO, 135-0016, JAPAN

URL: <http://www.cosmobio.co.jp>

e-mail: export@cosmobio.co.jp

[Outside Japan] Phone : +81-3-5632-9617

[国内連絡先] Phone : +81-3-5632-9610

FAX : +81-3-5632-9618

FAX : +81-3-5632-9619