



POLYCLONAL ANTIBODY

For research use only. Not for clinical diagnosis.

Catalog No. BAM-61-007-EX

Anti-RuvB antibody, rabbit polyclonal antiserum

BACKGROUND

E. coli **RuvB** protein forms a complex with RuvA protein and the complex promotes branch migration of Holliday junction at the late stage of homologous recombination and recombination repair. **RuvB** is a DNA motor protein which possesses the ATPase activity, activated by DNA and RuvA protein (1, 2). Its molecular weight is 37kD.

Product type	Primary antibodies
Host	Mouse
Source	
Form	Liquid antiserum added with 0.05% sodium azide
Volume	100 µl
Concentration	
Specificity	RuvB
Antigen	Purified full-size recombinant RuvB protein (Ref. 2)
Isotype	

Application notes WB Other applications have not been tested.
Recommended use

Recommended dilutions

Western blotting: x 3,000 dilution (Fig.1)

Optimal dilutions/concentrations should be determined by the end user.

Data Link: UniProtKB/Swiss-Prot [P0A812](#) (RUVB_ECOLI)

Staining Pattern

Cross reactivity

Storage 4°C for short period (about a half year). For longer period, store at -80°C

- References**
- 1) Shinagawa H and Iwasaki H (1996) "Processing the holliday junction in homologous recombination" *Trends Biochem Sci* **21**:107-111 PMID:[8882584](#)
 - 2) Iwasaki H *et al* (1992) "Escherichia coli RuvA and RuvB proteins specifically interact with Holliday junctions and promote branch migration" *Genes Dev* **6**:2214-2220 PMID: [1427081](#)

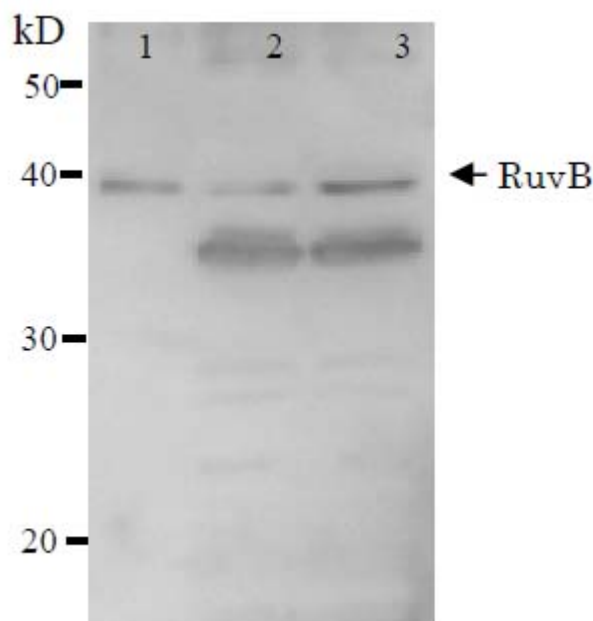


Fig.1 Detection of RuvB (37kD) protein by Western blotting using this antibody
lane1: RuvB protein 5ng
lane2: E. coli AB1157 crude extract
lane3: E. coli AB1157 *lexA* mutant crude extract
Expression of RuvB is enhanced by *lexA* mutation.

Related Products

BAM-01-007-EX	E. coli RuvA protein
BAM-01-009-EX	E. coli RuvB protein
BAM-01-011-EX	E. coli RuvC protein
BAM-61-005-EX	anti-RuvA antibody
BAM-61-009-EX	anti-RuvC antibody, rabbit polyclonal

For research use only. Not for clinical diagnosis.

Manufactured by BioAcademia, Inc.



COSMO BIO CO., LTD.

Inspiration for Life Science

TOYO 2CHOME, KOTO-KU, TOKYO, 135-0016, JAPAN

URL: http://www.cosmobio.co.jp/index_e.asp e-mail: export@cosmobio.co.jp

[Outside Japan] Phone : +81-3-5632-9617 [国内連絡先] Phone : +81-3-5632-9610

FAX : +81-3-5632-9618

FAX : +81-3-5632-9619