



POLYCLONAL ANTIBODY

For research use only. Not for clinical diagnosis.

Catalog No. BAM-60-011-EX

Anti-GFP

BACKGROUND

The green fluorescent protein (**GFP**) is composed of 238 amino acids (26.9 kDa), originally isolated from the jellyfish *Aequorea victoria* that fluoresces green when exposed to blue light (1). In cell and molecular biology, the **GFP** fused gene is frequently used as a reporter of expression and protein localization (2, 3).

Data Link: Swiss-Prot [P42212](#) (GFP_AEQVI)

Product type	Primary antibodies
Host	Rabbit
Source	Aequorea victoria
Form	Antiserum added with 0.05% sodium azide
Volume	100 ul
Concentration	
Specificity	Reactive to all variants of Aequorea victoria GFP such as S65T-GFP, RS-GFP, YFP, EGFP, and their-fusion proteins
Antigen	Recombinant His-tagged EGFP
Clone	
Isotype	
Cross reactivity	
Storage	Shipped at 4°C (long period, -20°C or -70°C)

Application notes WB, IP
Recommended use

Recommended dilutions

Western blotting: x2,000 dilution

References

Optimal dilutions/concentrations should be determined by the end user.

- 1) Shimomura O et al (1962) "Extraction, purification and properties of aequorin, a bioluminescent protein from the luminous hydromedusan, Aequorea." J Cell Comp Physiol 59: 223.239 PMID: [13911999](#)
- 2) Chalfie M et al (1994) "Green fluorescent protein as a marker for gene expression." Science 263 (5148): 802.805 PMID: [8303295](#)
- 3) Tsien R (1998) "The green fluorescent protein."(PDF) Annu Rev Biochem 67: 509.544 PMID: [9759496](#)

Related Products

BAM-60-001-EX anti-GFP monoclonal antibody (1A5) , Sepharose4BTM-conjugated

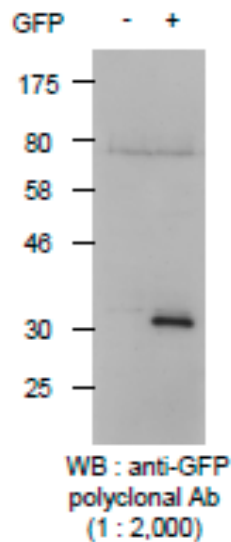


Fig. 1 Detection of GFP protein with this antibody by Western blotting.
 (-) Lysate of 293T cells transfected with an empty vector
 (+) Lysate of 293T cells transfected with the plasmid carrying the GFP gene

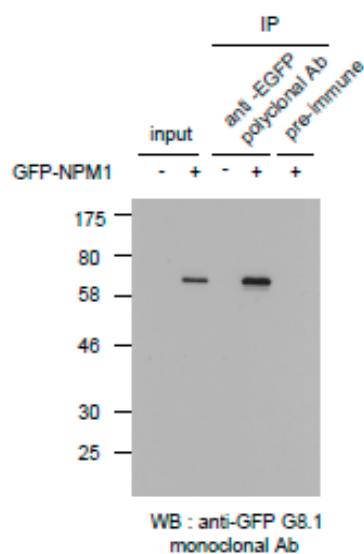


Fig.2 Immunoprecipitation of GFP-tagged protein with this antibody followed by Western blotting.
 (-) Lysate of 293T cells transfected with an empty vector
 (+) Lysate of 293T cells transfected with the plasmid carrying the GFP-tagged NPM1 gene

For research use only. Not for clinical diagnosis.

Manufactured by BioAcademia, Inc.



COSMO BIO CO., LTD.

Inspiration for Life Science

TOYO 2CHOME, KOTO-KU, TOKYO, 135-0016, JAPAN

http://www.cosmobio.co.jp/index_e.asp

Phone : +81-3-5632-9617

E-mail: export@cosmobio.co.jp

FAX : +81-3-5632-9618