



Catalog No. BAM-02-012-5-EX

## Taq DNA Polymerase Economy (- dNTPs), with Robust buffer

### BACKGROUND

*Thermus aquaticus* DNA polymerase (**Taq DNA polymerase**) was expressed in *E. coli* in large quantities and highly purified. The enzyme has thermostable DNA polymerase activity and the MW is 94 kDa. The enzyme has thermostable DNA polymerase activity and the MW is 94 kDa. This enzyme is suitable for PCR reactions; capable of amplifying DNA with various primers.

#### Applications:

- 1) High-throughput PCR
- 2) Colony PCR
- 3) Incorporation of dUTP, dITP, and fluorescence-labeled nucleotides
- 4) Primer extension
- 5) Addition of a single nucleotide (adenosine) at the 3'-blunt ends (for cloning into TA vector)

General composition of PCR reaction mixture (total 50 $\mu$ l)	
Taq DNA polymerase (5 units/ $\mu$ l)	0.25 $\mu$ l*
10 x Robust Buffer (Taq)	5 $\mu$ l
2.5mM (each) dNTPs	4 $\mu$ l
Template	< 500 ng
Primer 1	0.2~1.0 $\mu$ M (final conc.)
Primer 2	0.2~1.0 $\mu$ M (final conc.)
Sterile distilled water	up to 50 $\mu$ l

\*Use of excess amount of the enzyme is not recommended.

#### Size:

5 x 200 UNIT

#### Concentration:

5 units /  $\mu$ l, where one unit is defined as the amount of enzyme that can incorporate 10 nmols of total dNTPs into an acid-insoluble material in 30 minutes at 74°C when activated salmon sperm DNA was used as template/primer.

#### Form:

20mM Tris-HCl (pH 8.0), 100mM KCl, 0.1mM EDTA, 1mM DTT, 50% glycerol, 0.5% Tween20, 0.5% Igepal CA-630.

#### Quality

##### Assurance:

Greater than 95% purity as determined by SDS-PAGE (CBB staining) (Fig.1)  
The absence of endonucleases and exonucleases was confirmed.

#### PCR Test:

Good amplification result was obtained in PCR reaction using  $\lambda$ DNA as a template up to 14 kb (Fig.2).

#### Storage:

-20°C

#### Reagents Supplied with Enzyme:

1. 10 x Robust Buffer (Taq)

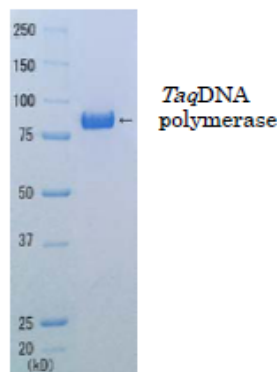


Fig.1 SDS-PAGE analysis of Taq DNA polymerase

#### Cautions for usage of Robust Buffer (Taq)without GC Enhancer

Robust Buffer induces maximum enzymatic activity. Therefore, cares should be taken to avoid production of undesirable smear bands in gel electrophoresis analysis by longer than optimal reaction time. We recommend about 5 to 10 seconds / kb elongation time for template up to 8 kb, and about 15 seconds / kb for up to 14 kb. We will recommend roughly the same elongation time to be set with 2-step PCR (shuttle PCR) and 3-step PCR. Extend the elongation time by short steps when amplification is not seen. The results of your experiments can be observed more rapidly by adopting 2-step PCR.

# 1. Examples of PCR coditions for the amplification of various sizes of λDNA

## Protocol for PCR

2kb, 4kb 94 ° C 1min 95 ° C 5sec 65 ° C 20sec } 25cycles	6kb 94 ° C 1min 95 ° C 5sec 65 ° C 1min } 25 cycles	8kb 94 ° C 1min 95 ° C 5sec 65 ° C 1min 20sec } 25 cycles
10kb, 12kb 94 ° C 1min 98 ° C 5sec 68 ° C 3min 72 ° C 3min } 30 cycles	14kb 94 ° C 1min 98 ° C 5sec 68 ° C 4min 72 ° C 4min } 30 cycles	

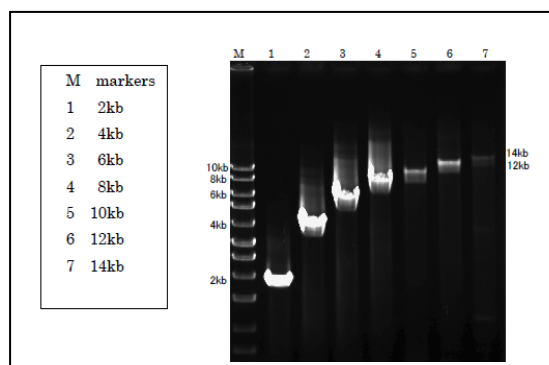


Fig.2 PCR products obtained by using Robust buffer (agarose gel electrophoresis)

*For research use only. Not for clinical diagnosis.*

Manufactured by BioAcademia, Inc.



**COSMO BIO Co., LTD.**

Inspiration for Life Science

TOYO 2CHOME, KOTO-KU, TOKYO, 135-0016, JAPAN

URL: <http://www.cosmobio.co.jp>

e-mail: [export@cosmobio.co.jp](mailto:export@cosmobio.co.jp)

[Outside Japan] Phone : +81-3-5632-9617

[国内連絡先] Phone : +81-3-5632-9610

FAX : +81-3-5632-9618

FAX : +81-3-5632-9619