



7 UHc[Bc '\$%) ' &9 L

GhfYdhc`ngjb`C`fkYa c`nhjWghfYdhcWcWWW gkL

[illegible]

5 dd`jWU]cbg.´

Á

: cfa . FÁ * Ð |Á ÁÚÓÚÁËËÁ T ÁÖVÁ ÆÁ Á ^ & | [| Ë Á | ä ^ ä Á ^ Á ä ä } Á
Á

Á

A Yugi fYa YbhcZH Y' Öãä ää } Ħ ĦP WĦ Ħ @ Ħ ß Ħ ää } Ħ Ħ Ħ Ħ @ { [| • ä Ħ • ä * Ħ Ħ Ħ @ ^] Ħ Ħ ä Ħ || [ä Ħ •
UWĦj]lm' Ħ

E Q æ ç æ ^ â Û Š U & æ Ĥ Ĥ ^ Ĥ æ ç æ ^ â Ĥ ^ Ĥ Ç | Ĥ ^ æ ^ } • Ĥ ~ & Ç æ Ĥ Ç Ĥ T & • ç ā ^ Ĥ ! Ĥ Ĥ Ĥ T Ĥ
Ö W Ĥ Ç Ĥ
Ĥ

This product has been used in Ref. 3.

Å Walev I et al "Delivery of proteins into living cells by reversible membrane permeabilization with streptolysin-O."

PNAS 98: 3185-3190 (2001) PMID: 11248053

2. Palmer M "The family of thiol-activated, cholesterol-binding cytolytic toxins." *Toxicon* 39: 1681-1689 (2001) PMID: 11595631

3. Maeda, Y. et al. "GPHR is a novel anion channel critical for acidification and functions of the Golgi apparatus." *Nat. Cell*

Biol. 10: 1135-45 (2008) PMID: 18794847

*This product is only for research use, not for human use.

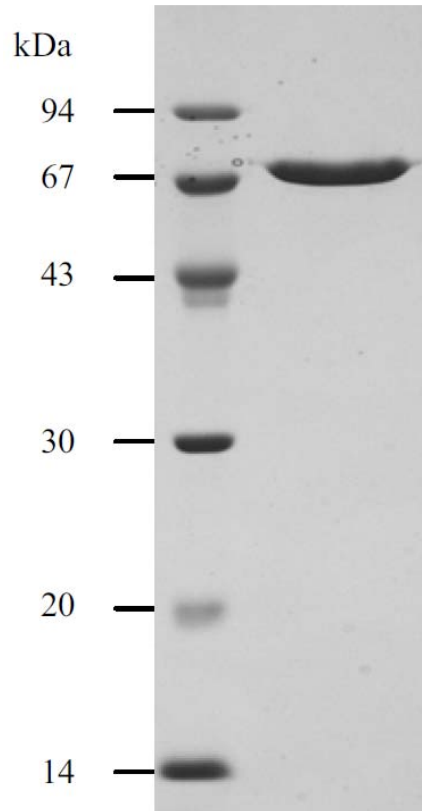


Fig. Purified SLO analysed by SDS-PAGE of 50% hemolysis on 3% sheep red blood cell

For research use only. Not for clinical diagnosis.

Manufactured by BioAcademia, Inc.



COSMO BIO CO., LTD.
Inspiration for Life Science

TOYO 2CHOME, KOTO-KU, TOKYO, 135-0016, JAPAN

URL: <http://www.cosmobio.co.jp> e-mail: export@cosmobio.co.jp

[Outside Japan] Phone : +81-3-5632-9617 [国内連絡先] Phone : +81-3-5632-9610
FAX : +81-3-5632-9618 FAX : +81-3-5632-9619