



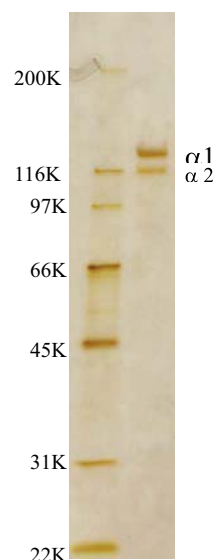
Cat.#ACE-EC1-R205-EX

## Human Collagen Type I (Atelo-collagen)

Collagen is one of the main proteins that consists ECM (Extra Cellular Matrix). Especially, Type I collagen is the most abundant protein in the connective tissues, such as tendon, skin and bone. This Human Collagen Type I is derived from human normal fibroblasts and has been confirmed as native type I atelo-collagen by various bioassays.

<b>Lot No.:</b>	XXXXXX
<b>Material:</b>	Human fibroblast, Conditioned Medium
<b>Purification:</b>	Collagen was extracted and purified from conditioned medium* of cell culture with pepsin
<b>Concentration:</b>	1mg/mL
<b>Volume:</b>	0.5mL
<b>Buffer:</b>	0.1M acetic acid solution
<b>Purity:</b>	>98% by SDS-PAGE (silver staining)
<b>Quality control:</b>	Human collagen type I has been found negative for the presence of bacterial, fungi and mycoplasma (after 0.22 $\mu$ filtration).
<b>Storage:</b>	-20°C Up to 1 year from date of production

### SDS-PAGE



\*: Cells were proliferated in growth medium containing fetal bovine serum.

Human collagen was secreted and purified from non-FBS conditioned medium.

**FOR RESEARCH LABORATORY USE ONLY**

Manufactured by : ACEL, Inc.



COSMO BIO CO., LTD.  
Inspiration for Life Science

TOYO 2CHOME, KOTO-KU, TOKYO, 135-0016, JAPAN  
<http://www.cosmobio.com> e-mail : [export@cosmobio.co.jp](mailto:export@cosmobio.co.jp)  
Phone : +81-3-5632-9617 FAX : +81-3-5632-9618